



238 Pillow Street
 Butler, PA 16001
 724-283-4681
 724-283-5939 (fax)
 www.bwieagle.com

PRODUCT INFORMATION BULLETIN

WATER-STIK Dust Suppression System MODEL 67-7000

DESCRIPTION

A safe, inexpensive Dust Suppressor that's truly cost-effective. The WATER-STIK performs every bit as well, if not better than all the "sophisticated" higher-priced units.

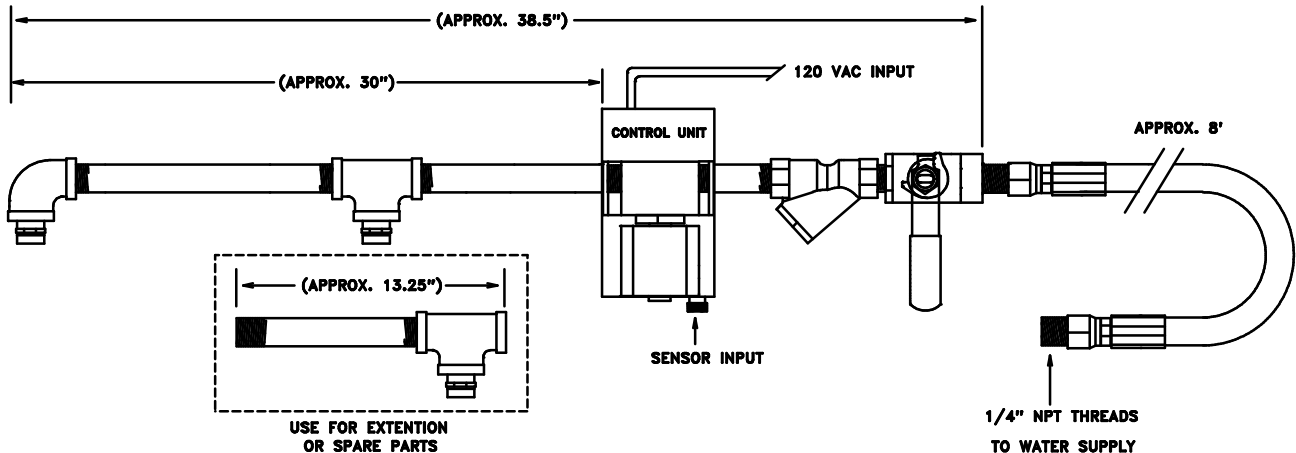
Factory assembled and requiring only simple water and electrical hook-ups, the WATER-STIK is the answer to instant compliance and the end of costly citations.

The WATER-STIK sprays only when media is present where dust is liberated (usually just before a transfer point). When the belt is not running, no water is sprayed.

INSTALLATION

1. Suspend the WATER-STIK over the conveyor at a height that gives the desired spray pattern.
2. Make connections to water supply.
3. Connect power cable to 120 VAC. Ground connection required for proper operation and safety.
4. Adjust a conveyor roller to spin only when material is passing over it. If no material is on the belt, the belt should not contact the roller. See VR SENSOR installation section.

DIMENSIONS



SPECIFICATIONS

AC Input	120 VAC 15 W
Fuse Protected	2 amp
Minimum Operating Speed	100 RPM (use two (2) targets for speeds below 100 RPM)
On-Time Delay	2 Seconds
Maximum Water Pressure	500 P.S.I.
GPM's @ 400 P.S.I.	.8 GPM (1.2 GPM if extension is used)

REPLACEMENT PARTS

Spray Nozzle	99-HDW-0003
High Volume Nozzle	99-HDW-0063
Variable Reluctance Sensor, General Mount	10-7003

VR SENSOR

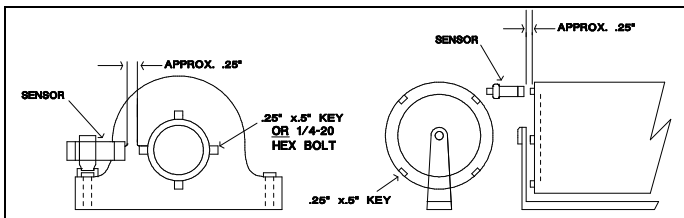
Variable Reluctance Type

MODELS 10-7003, 10-7032

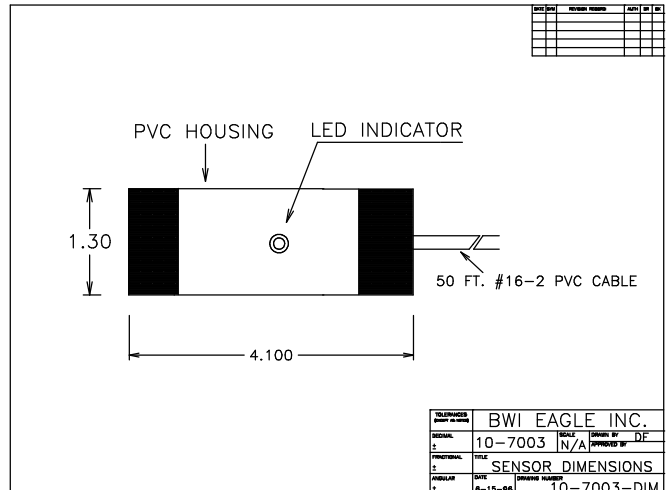
INSTALLATION

1. Select the roller or shaft to be monitored. If a roller is to be monitored, be sure it is always contacting the belt.
2. Affix a target on the roller or shaft. Target should be a piece of key stock, 1/4-20 Hex Nut, etc. (Figure 1) Dents and notches are not recommended as targets.
3. Mount sensor firmly with hose clamps or U-bolts to prevent it from moving or working loose. Tape is **NOT** recommended as a fastener.
4. Before tightening, place sensor close enough to the target(s) to produce a strong, steady blinking on the sensor-head LED. The LED should blink in direct proportion to the roller speed. Effective distance between sensor and target(s) is approximately .25 inch to .75 inch depending on target mass and roller speed.

FIGURE 1



DIMENSIONS



SPECIFICATIONS

Dimensions	4 in. x 1.3 in. O.D.
Sensor Type	Variable Reluctance Failsafe Output
Sensor Power Requirement	Current limited 12 VDC from Control Unit
Sensor Cable	Unshielded Twisted Pair 16/2
Distance	Sensor to control unit - 2 Miles MAX
Minimum Sensing Speed	60 RPM

DOCUMENT DATE: 11-Aug-04



238 Pillow Street
Butler, PA 16001
(724) 283-4681
Fax (724) 283-5939
www.bwieagle.com