

#80 Flanged Diaphragm Seals



Description

Winters Instruments Flanged Diaphragm Seal is used in industrial applications such as oil refineries, pulp and paper mills and chemical plants and is CRN registered.

SPECIFICATIONS	
Housing:	Wide range of materials such as 316 stainless steel, Monel, Hastelloy B & C, Titanium, Tantalum, PVC, Carbon steel, Teflon, Alloy 20 and more are available (Nickel plated carbon steel, or stainless steel upper housing standard, other material available).
Construction:	Two piece construction
Connection:	1/4" and 1/2" NPT female gauge connections standard (Other NPTF gauges connections available) 1" (25mm), 1 1/2" (40mm) and 2" (50mm) pipe size and #150 and #300 pressure rating standard. (Other configurations available)
Other:	<ul style="list-style-type: none"> Cleanout type for easy cleaning and calibrating Saddle Diaphragm seals available upon request Flushing connections available

Product Codes

Type* Process Conn / Press. Rating	Instrument Connection	Diaphragm Material	Lower Housing Wetted Parts	Carbon Steel	Stainless Steel
				Upper Housing Non-Wetted Parts	Upper Housing Non-Wetted Parts
1" - 150#RF					
Welded Diaphragm	1/2"NPT	316 St/St	316 St/St	D1150SS5CS	D1150SS5SS
Welded Diaphragm	1/2" NPT	Tantalum	Teflon Lined - 316 St/St	D1150UL5CS	D1150UL5SS
Welded Diaphragm	1/2" NPT	Hastelloy C	Monel	D1150HM5CS	D1150HM5SS
Welded Diaphragm	1/2" NPT	Hastelloy C	Hastelloy C	D1150HH5CS	D1150HH5SS
Welded Diaphragm	1/4" NPT	316 St/St	316 S/S	D1150SS25CS	D1150SS25SS
Welded Diaphragm	1/4" NPT	Tantalum	Teflon Lined - 316 St/St	D1150UL25CS	D1150UL25SS
Welded Diaphragm	1/4" NPT	Hastelloy C	Monel	D1150HM25CS	D1150HM25SS
Welded Diaphragm	1/4" NPT	Hastelloy C	Hastelloy C	D1150HH25CS	D1150HH25SS
1" - 300#RF					
Welded Diaphragm	1/2" NPT	316 St/St	316 St/St	D1300SS5CS	D1300SS5SS
Welded Diaphragm	1/2" NPT	Tantalum	Teflon Lined - 316 St/St	D1300UL5CS	D1300UL5SS
Welded Diaphragm	1/2" NPT	Hastelloy C	Monel	D1300HM5CS	D1300HM5SS
Welded Diaphragm	1/2" NPT	Hastelloy C	Hastelloy C	D1300HH5CS	D1300HH5SS
Welded Diaphragm	1/4" NPT	316 St/St	316 St/St	D1300SS25CS	D1300SS25SS
Welded Diaphragm	1/4" NPT	Tantalum	Teflon Lined - 316 St/St	D1300UL25CS	D1300UL25SS
Welded Diaphragm	1/4" NPT	Hastelloy C	Monel	D1300HM25CS	D1300HM25SS
Welded Diaphragm	1/4" NPT	Hastelloy C	Hastelloy C	D1300HH25CS	D1300HH25SS



* Replaceable and Teflon Diaphragms available
Other fill fluids (seal only) available upon request

· Other materials, pipe size and pressure ratings available upon request.

#80 Flanged Diaphragm Seals (Welded)

Product Codes					
Type* Process Conn/ Press. Rating	Instrument Connection	Diaphragm Material	Lower Housing Wetted Parts	Carbon Steel	Stainless Steel
				Upper Housing Non-Wetted Parts	Upper Housing Non-Wetted Parts
1.5" - 150#RF					
Welded Diaphragm	1/2" NPT	316 St/St	316 St/St	D15150SS5CS	D15150SS5SS
Welded Diaphragm	1/2" NPT	Tantalum	Teflon Lined - 316 St/St	D15150UL5CS	D15150UL5SS
Welded Diaphragm	1/2" NPT	Hastelloy C	Monel	D15150HM5CS	D15150HM5SS
Welded Diaphragm	1/2" NPT	Hastelloy C	Hastelloy C	D15150HH5CS	D15150HH5SS
Welded Diaphragm	1/4" NPT	316 St/St	316 St/St	D15150SS25CS	D15150SS25SS
Welded Diaphragm	1/4" NPT	Tantalum	Teflon Lined - 316 St/St	D15150UL25CS	D15150UL25SS
Welded Diaphragm	1/4" NPT	Hastelloy C	Monel	D15150HM25CS	D15150HM25SS
Welded Diaphragm	1/4" NPT	Hastelloy C	Hastelloy C	D15150HH25CS	D15150HH25SS
1.5" - 300#RF					
Welded Diaphragm	1/2" NPT	316 St/St	316 St/St	D15300SS5CS	D15300SS5SS
Welded Diaphragm	1/2" NPT	Tantalum	Teflon Lined - 316 St/St	D15300UL5CS	D15300UL5SS
Welded Diaphragm	1/2" NPT	Hastelloy C	Monel	D15300HM5CS	D15300HM5SS
Welded Diaphragm	1/2" NPT	Hastelloy C	Hastelloy C	D15300HH5CS	D15300HH5SS
Welded Diaphragm	1/4" NPT	316 St/St	316 St/St	D15300SS25CS	D15300SS25SS
Welded Diaphragm	1/4" NPT	Tantalum	Teflon Lined - 316 St/St	D15300UL25CS	D15300UL25SS
Welded Diaphragm	1/4" NPT	Hastelloy C	Monel	D15300HM25CS	D15300HM25SS
Welded Diaphragm	1/4" NPT	Hastelloy C	Hastelloy C	D15300HH25CS	D15300HH25SS
2" - 150#RF					
Welded Diaphragm	1/2" NPT	316 St/St	316 St/St	D2150SS5CS	D2150SS5SS
Welded Diaphragm	1/2" NPT	Tantalum	Teflon Lined - 316 St/St	D2150UL5CS	D2150UL5SS
Welded Diaphragm	1/2" NPT	Hastelloy C	Monel	D2150HM5CS	D2150HM5SS
Welded Diaphragm	1/2" NPT	Hastelloy C	Hastelloy C	D2150HH5CS	D2150HH5SS
Welded Diaphragm	1/4" NPT	316 St/St	316 St/St	D2150SS25CS	D2150SS25SS
Welded Diaphragm	1/4" NPT	Tantalum	Teflon Lined - 316 St/St	D2150UL25CS	D2150UL25SS
Welded Diaphragm	1/4" NPT	Hastelloy C	Monel	D2150HM25CS	D2150HM25SS
Welded Diaphragm	1/4" NPT	Hastelloy C	Hastelloy C	D2150HH25CS	D2150HH25SS
2" - 300#RF					
Welded Diaphragm	1/2" NPT	316 St/St	316 St/St	D2300SS5CS	D2300SS5SS
Welded Diaphragm	1/2" NPT	Tantalum	Teflon Lined - 316 St/St	D2300UL5CS	D2300UL5SS
Welded Diaphragm	1/2" NPT	Hastelloy C	Monel	D2300HM5CS	D2300HM5SS
Welded Diaphragm	1/2" NPT	Hastelloy C	Hastelloy C	D2300HH5CS	D2300HH5SS
Welded Diaphragm	1/4" NPT	316 St/St	316 St/St	D2300SS25CS	D2300SS25SS
Welded Diaphragm	1/4" NPT	Tantalum	Teflon Lined - 316 St/St	D2300UL25CS	D2300UL25SS
Welded Diaphragm	1/4" NPT	Hastelloy C	Monel	D2300HM25CS	D2300HM25SS
Welded Diaphragm	1/4" NPT	Hastelloy C	Hastelloy C	D2300HH25CS	D2300HH25SS

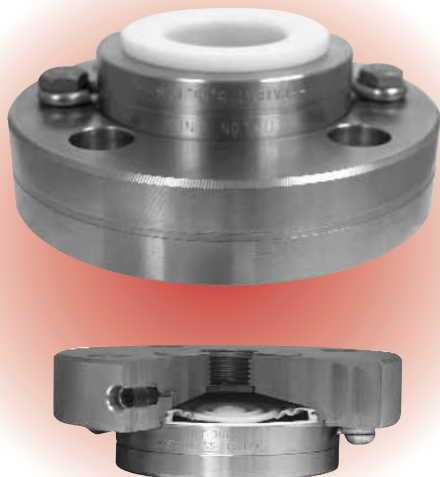
* Replaceable Diaphragms available

· Other materials, pipe size and pressure ratings available upon request.

Other fill fluids (seal only) available upon request



#80 Flanged Diaphragm Seals (Teflon)



Description

Winters Instruments Flanged Diaphragm Seal is used in industrial applications such as oil refineries, pulp and paper mills and chemical plants and is CRN registered.

SPECIFICATIONS	
Housing:	Wide range of materials such as 316 stainless steel, Monel, Hastelloy B & C, Titanium, Tantalum, PVC, Carbon steel, Teflon, Alloy 20 and more are available (Nickel plated carbon steel, or stainless steel upper housing standard, other material available).
Diaphragm:	Teflon for increased compatibility, sensitivity & versatility
Construction:	2 piece
Connection:	1/4" and 1/2" NPT female gauge connections standard (Other NPTF gauges connections available) 1" (25mm), 1 1/2" (40mm) and 2" (50mm) pipe size and #150 and #300 pressure rating standard. (Other configurations available)

Product Codes					
Type* Process Conn/ Press. Rating	Instrument Connection	Diaphragm Material	Lower Housing Wetted Parts	Carbon Steel	Stainless Steel
				Upper Housing Non-Wetted Parts	Upper Housing Non-Wetted Parts
1" - 150#RF					
Teflon Diaphragm	1/2" NPT	Teflon	316 St/St - Teflon lined	D001	D002
Teflon Diaphragm	1/4" NPT	Teflon	316 St/St - Teflon lined	D003	D004
1" - 300#RF					
Teflon Diaphragm	1/2" NPT	Teflon	316 St/St - Teflon lined	D005	D006
Teflon Diaphragm	1/4" NPT	Teflon	316 St/St - Teflon lined	D007	D008
1.5" - 150#RF					
Teflon Diaphragm	1/2" NPT	Teflon	316 St/St - Teflon lined	D009	D010
Teflon Diaphragm	1/4" NPT	Teflon	316 St/St - Teflon lined	D011	D012
1.5" - 300#RF					
Teflon Diaphragm	1/2" NPT	Teflon	316 St/St - Teflon lined	D013	D014
Teflon Diaphragm	1/4" NPT	Teflon	316 St/St - Teflon lined	D015	D016
2" - 150#RF					
Teflon Diaphragm	1/2" NPT	Teflon	316 St/St - Teflon lined	D017	D018
Teflon Diaphragm	1/4" NPT	Teflon	316 St/St - Teflon lined	D019	D020
2" - 300#RF					
Teflon Diaphragm	1/2" NPT	Teflon	316 St/St - Teflon lined	D021	D022
Teflon Diaphragm	1/4" NPT	Teflon	316 St/St - Teflon lined	D023	D024

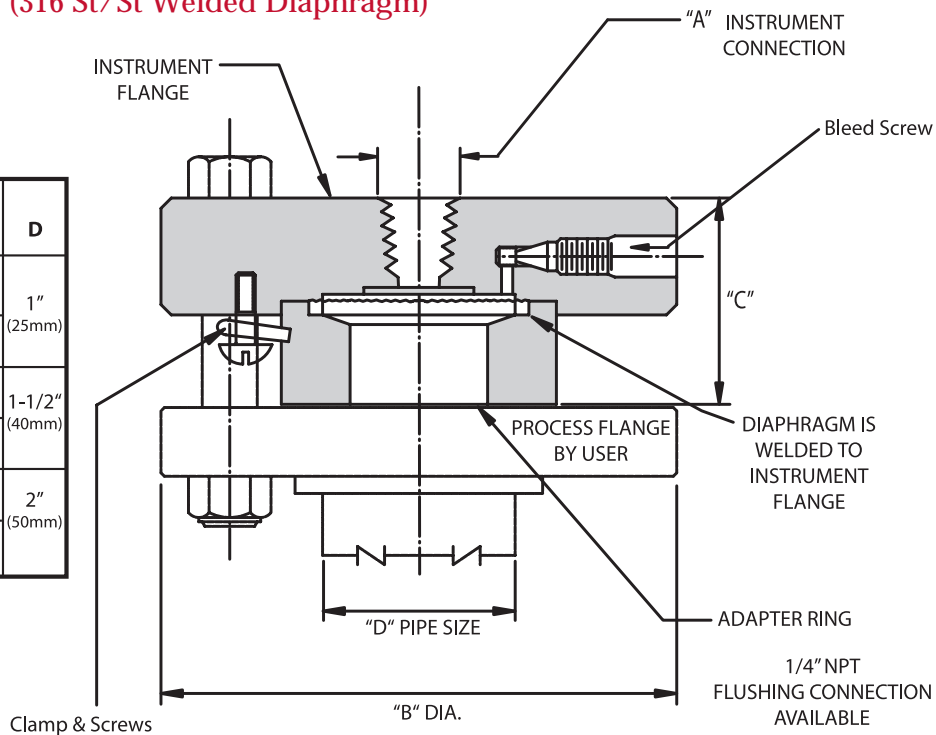
* Replaceable Diaphragms available
Other fill fluids (seal only) available upon request



#80 Flanged Diaphragm Seals

#D81B Diaphragm Seal (316 St/St Welded Diaphragm)

A NPT	PRESSURE RATING	B	C	D
1/4 1/2	150 LB.	4-1/4" (108mm)	1-11/16"	1" (25mm)
1/4 1/2	300 LB.	4-3/4" (108mm)	1-11/16"	
1/4 1/2	150 LB.	5" (125mm)	1-5/8"	1-1/2" (40mm)
1/4 1/2	300 LB.	6" (150mm)	1-5/8"	
1/4 1/2	150 LB.	6" (150mm)	1-5/8"	2" (50mm)
1/4 1/2	300 LB.	6-1/2" (162mm)	1-5/8"	



Diaphragm Seals

#D80B Diaphragm Seal (Replaceable Teflon® Diaphragm)

A NPT	PRESSURE RATING	B	C	D
1/4 1/2	150 LB.	4-1/4" (108mm)	1-11/16" (44mm)	1" (25mm)
1/4 1/2	300 LB.	4-3/4" (108mm)	1-11/16" (44mm)	
1/4 1/2	150 LB.	5" (125mm)	1-5/8" (42mm)	1-1/2" (40mm)
1/4 1/2	300 LB.	6" (150mm)	1-5/8" (42mm)	
1/4 1/2	150 LB.	6" (150mm)	1-5/8" (42mm)	2" (50mm)
1/4 1/2	300 LB.	6-1/2" (162mm)	1-5/8" (42mm)	

