

omni GRIND™ CENTRIFUGAL GRINDER PUMPS

Barnes Omni Grind™ centrifugal grinder pump sets a standard for reliability and durability. It is ideal for low-cost, residential or commercial high-head on high-flow applications. The built-in automatic resetting motor overload ensures peace of mind and provides utmost protection. The design allows for easy and trouble-free installation with these features:

1. Internal mounted starting components
2. Exclusive Quick-Connect Power Cord
3. Removable discharge flange

Omni Grind™ Advantages

- Recessed vortex impeller design easily handles finely ground solids generated by the grinder
- Exclusive Slicerator eliminates jams by applying the full torque of the motor on one small section of the cutter ring at a time

Reduced Life-cycle Costs

- Heavy-duty 2 hp motor with oil lubricated upper and lower ball bearing standard for minimal wear
- Heavy-duty industrial silicon carbide seal for extended usage
- Large pump end bearing and short shaft overhang significantly extends mechanical seal life by reducing shaft deflection
- Reliable Solid Start Switch provides longer life-cycle and improves mean time between service calls
- Oil-filled motor enables the pump motor to run cooler under severe operating conditions

Higher Flow Version:

Capacities to 55 GPM
Heads to 104 Feet

Higher Head Version:

Capacities to 33 GPM
Heads to 125 Feet



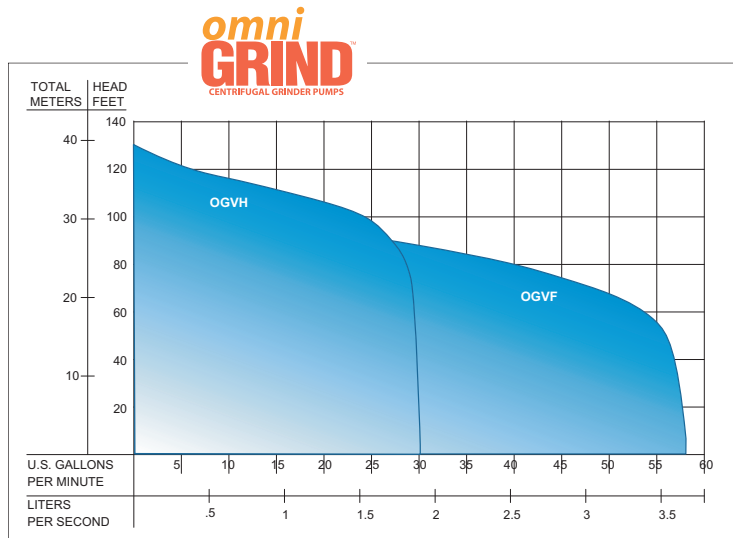
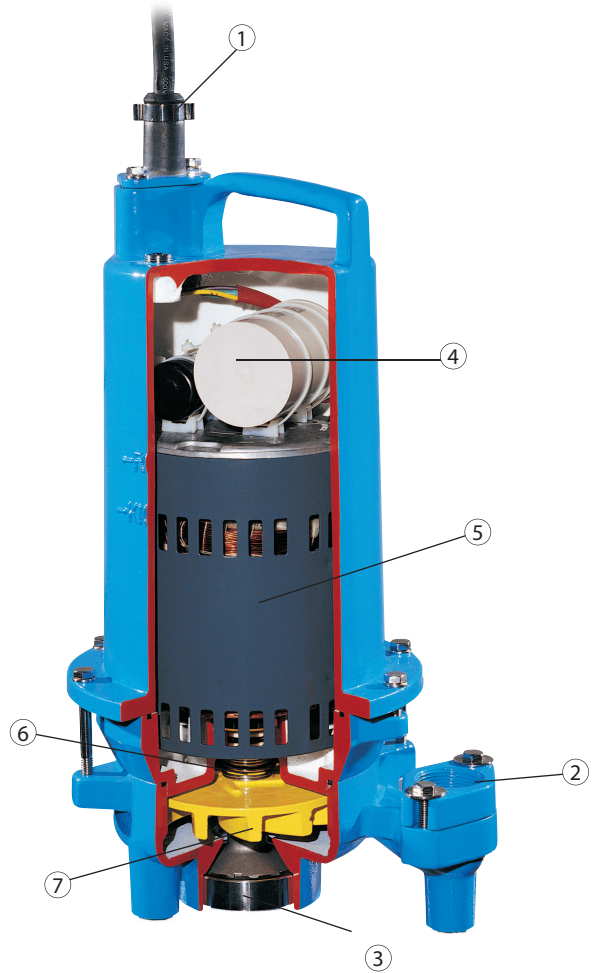
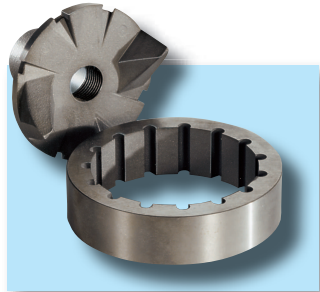
Accessory Options:

- Pump Support Stand
- Break Away Fitting or moveable slide rail fitting
- ESPS™ (Environmentally Sealed Pressure Switch) Level Controls

Barnes Pressure Sewer Omni Grind

Exclusive Slicerator™

The staggered slicing action of the grinder radial cutter dramatically increases the torque at the cutting surface, cuts with less horsepower, and increases the unit's efficiency. Eliminates clogging with particularly troublesome objects such as plastic, rubber, sanitary napkins, disposable diapers and cloth items.



Omni Grind Features

1. Quick disconnect cord
2. Threaded discharge flange
3. Exclusive Slicerator
4. Integral capacitors for start and run
5. Oil filled motor with overload protection
6. Silicon carbide mechanical seal for long life
7. Vortex impeller for solids handling

CRANE

A Crane Co. Company

PUMPS & SYSTEMS

Crane Pumps & Systems
420 Third Street
Piqua, Ohio 45356
(937) 778-8947
Fax (937) 773-7157
www.cranepumps.com

Crane Pumps & Systems Canada
83 West Drive
Brampton, Ont. Canada L6T 2J6
(905) 457-6223
Fax (905) 457-2650



E81854 C US

© 2012 Crane Pumps & Systems, Inc.
A Crane Co. Company
Printed in U.S.A.
BPSOMNI - Rev. D (8/12)

brands you trust.

BARNES®

burks®

DEMING®

WEINMAN®



PROSSER®