

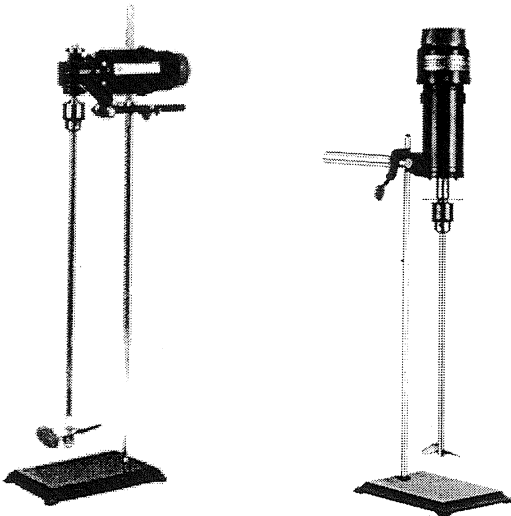


Cleveland **emi** Eastern Mixers

DIVISION OF
EMI INC. TECHNOLOGY GROUP

4 Heritage Park Road
Clinton, CT 06413-1836
T: 860-669-1199
F: 860-669-7461

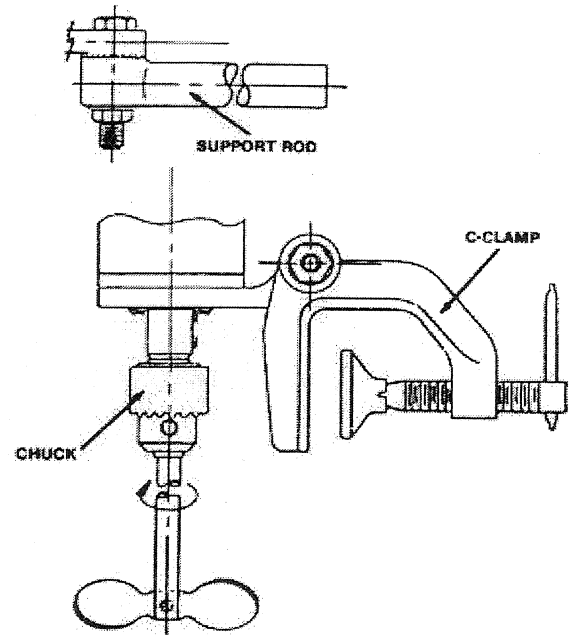
EASTERN LABORATORY STIRRERS INSTALLATION INSTRUCTIONS



- To assemble the mounting hardware, bolt c-clamp or support rod through the mating lug on the base plate, with hex head bolt, split lockwasher and hex nut. Always place split lockwasher under the hex nut. On ring stand models, use the #340 universal clamp to mount to the optional ring stand.
- Energize the stirrer and check for shaft whipping. If shaft whips excessively, reposition shaft in chuck using chuck key.
- Both models are supplied with a fuse holder and fuse.
 - 5VB uses 1.0 amp fuse $\frac{1}{4}$ x $1\frac{1}{4}$.
 - 8A uses 4.0 amp Slo-Blow fuse 5 x 20 mm.

MODELS 8AR & 5VB

- Remove stirrer parts from the box. Remove all packing from stirrer housing, shaft, c-clamp or support rod.
- Check to see that the following parts are present:
 - Motor, shaft and prop assembly.
 - RS models** include a support rod (for ring stand models) with $\frac{3}{8}$ -16 x $1\frac{3}{4}$ long hex head bolt, $\frac{3}{8}$ split lockwasher and $\frac{3}{8}$ -16 hex nut and a #340 universal clamp.
 - C models** include a c-clamp with its $\frac{3}{8}$ -16 x $1\frac{1}{2}$ long hex head bolt, $\frac{3}{8}$ lockwasher and $\frac{3}{8}$ -16 hex nut.
- To assemble the shaft and prop assembly to the motor shaft, slip the shaft into chuck and tighten with the key supplied with the unit. Tighten at all 3 locations around the chuck.



EASTERN LABORATORY STIRRERS INSTALLATION INSTRUCTIONS



MODEL A6R

1. Remove stirrer parts from the box. Remove all packing from motor housing, prop assembly and handle. Be sure that the hole in the air tube support arm is free of all packing or obstructions. This functions as an air inlet for the motor. See drawing below to view correct orientation of air inlet as seen from the top of the mixer. The motor will run only in one direction (clockwise). DO NOT reverse the inlet support arm with the exhaust muffler.

2. Check to see that the following parts are present: Motor, shaft /prop assembly and air tube support arm. A6R-RS models will have a #340 universal clamp that will clamp onto the support arm for ring stand mounting. A6R-C models will have a c-clamp.
3. To assemble shaft and prop assembly to the motor, proceed as follows: Assemble prop shaft into chuck and tighten with key supplied with the unit. Tighten at all 3 locations around the chuck.
4. Energize stirrer and check for shaft whipping. If shaft whips excessively re-assemble shaft as described in step 3. If whipping continues return to factory for replacement.
5. For moderate speeds (under 2000 rpm) or intermittent operation, one squirt of oil in the air inlet per day will suffice. If the duty is continuous or the speed is high, use an automatic air line oiler set to feed one to three drops per minute. The bearings will receive oil from the roto chamber during automatic oiling. Use SAE #10 light oil without detergents. Install a moisture trap and filter in the airline ahead of the motor.

