

# Peerless Pump

Industrial Vertical  
Turbine Pumps



# PEERLESS INDUSTRIAL VERTICAL PUMPS. PERFORMANCE WITHOUT COMPROMISE.

## VERTICAL PUMPS

Above ground, all vertical pumps may look the same, but beneath the surface is where the difference really becomes apparent. Explore the PEERLESS PUMP DIFFERENCE.

## EXPERIENCE

Peerless Pump is a leading manufacturer of engineered vertical pumps for the industrial, municipal, process and utilities markets. Our solid reputation for innovation, quality and reliability began over 80 years ago when we were among the first to introduce a line of vertical turbine pumps.

Over the years we have been involved in all types of applications, ranging from the pumping of butane at  $-40^{\circ}$  F to hot, corrosive liquids, such as geothermal water and others at temperatures up



to  $450^{\circ}$  F. Our Research & Development group designs using state-of-the-art CAD systems. Compare our experience with others. Experience is the PEERLESS PUMP DIFFERENCE.

## FULL RANGE

You can count on Peerless Pump Company to meet all your hydraulic needs. With capacities up to 150,000 GPM (34,000  $m^3/h$ ), heads to 2,300 ft. (700 m) and designs up to 5,000 horsepower (3,700 kw), we have a full range of vertical turbine, mixed flow and propeller pumps to suit your requirements. Why not do business with one company that can meet all your needs. Full range is the PEERLESS PUMP DIFFERENCE.

## CUSTOMER DESIGNS

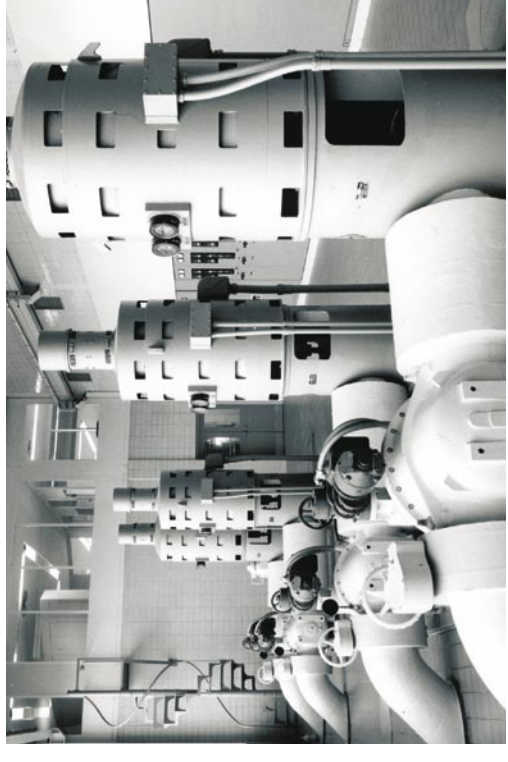
Engineered designs for unusual applications have always been a speciality for Peerless Pump. From open sump to dry pit mounted configurations, no applications is beyond our technical expertise. Drawing upon our many years of engineering and manufacturing experience is the best way to solve your difficult application, whether it's low NPSH conditions, temperature

extremes, or unusual configurations. Custom designs are the PEERLESS PUMP DIFFERENCE.

## CUSTOMER SERVICE

From the time of inquiry through commissioning of the equipment, the Peerless Pump team is dedicated to exemplary performance. We invest in training for our people and in modern equipment, like machining cell technology, to provide the

best possible product. Our extensive manufacturing facilities and Quick Response Service Centers stretches around the world, so Peerless Pump parts and service are always readily available. Customer service is the PEERLESS PUMP DIFFERENCE.



## OUTSTANDING VALUE

A Peerless pump is one of the best values on the market today. Solid mechanical and hydraulic design combine to ensure high efficiency, low maintenance and peak performance. Your results are lower overall pumping costs, year after year. Outstanding value is the PEERLESS PUMP

DIFFERENCE. On the outside, Peerless Pump's experience, full range, engineering capability, and commitment to outstanding customer service and quality set us apart from our competition.

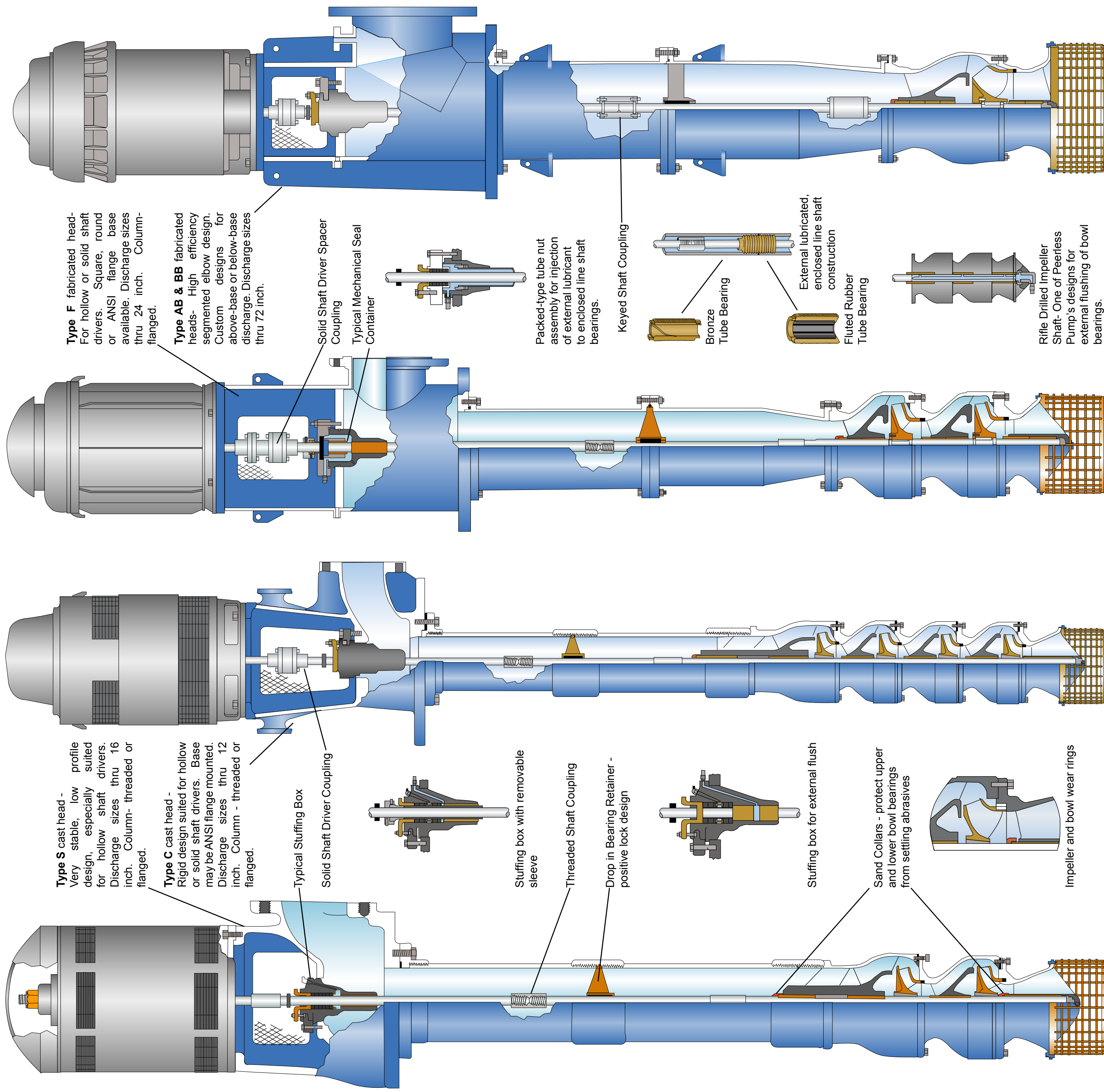
**FOR PERFORMANCE WITHOUT COMPROMISE, EXPERIENCE THE PEERLESS PUMP DIFFERENCE.**

# PEERLESS PUMP

## INDUSTRIAL VERTICAL PUMPS

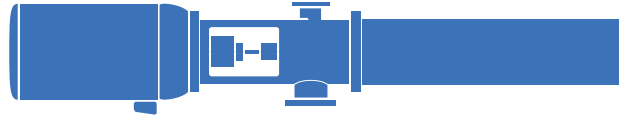
**ENGINEERED FOR YOUR APPLICATION**

### DESIGN OPTIONS



**PEERLESS PUMP COMPANY**

## Other Peerless Industrial Vertical Pumps

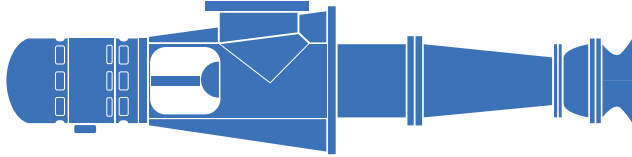


### Tee-Head Canned Pumps...

...multi-stage close-coupled vertical line shaft pumps with barrel-enclosed bowl units. Recommended for low NPSH conditions.

#### Typical

- Applications:** Line boost, transfer of process liquids, hydrocarbons, hot or cold water, etc.
- Capacities:** to 50,000 gpm (11,360 m<sup>3</sup>/hr)
- Heads:** to 3,000 psi (211 kg/cm<sup>2</sup>) - 3 pumps
- Drives:** Electric motors, right angle gear drives, steam turbines, combination drives
- Temperature Range:** -60° F (-65° C) to + 450° F (282° C)
- Materials:** Any machinable alloys suitable for the applications.
- Configurations:** As required by the application.
- Additional Info:** Request brochure B-400



### Large Axial, Mixed Flow and Radial Impeller Pumps...

...vertical short setting line shaft pumps with fabricated discharge elbows for handling large volumes of fresh or salt water.

#### Typical

- Applications:** Sourcewater, cooling tower circulators, treated effluent transfer, condenser service, flood control, dewatering, etc.
- Capacities:** to 200,000 gpm (45,440 m<sup>3</sup>/hr)
- Heads:** 2 to 100 feet (30.5 m)
- Drives:** Electric motors, right angle gear drives, steam turbines, combination drives.
- Materials:** Any machinable alloys suitable for the application.
- Configurations:** As required by the application.
- Additional Info:** Request brochure B-300



**Peerless Pump Company**  
P.O. Box 7026  
Indianapolis, IN 46207-7026  
(800)879.0182 - toll free  
(317)925-9661, Fax: (317)924-7388  
[www.peerlesspump.com](http://www.peerlesspump.com)