

AC CURRENT SENSOR with 4-20mA output

- Output 4-20mA
- 1/2% accuracy
- Linear output from 0 amps

Model 200 SERIES

Our solid core current transducers convert a monitored AC current to a proportional 4-20mA output.

Applications:

They are used to monitor motors, pumps, conveyors, machine tools and any electrical load where an analogue representation is required over a range of currents. All models are CSA approved and UL listed.

Description:

The 200 comprises a current transformer, power circuit, precision rectifier, high-gain servo amplifier and span and zero adjustments. Each sensor has three user selectable ranges. The two wire loop powered 4-20mA output is available on two 6-32 screw terminals.

TECHNICAL DATA

Size: Units are 2 1/8" H x 2 1/8" W x 1" D with an integral mounting base 3 1/4" long and mounting centres of 2 3/4". The through hole is 0.55" diameter for up to #2/0 cable.

Operating temperature: -10C to +70C.

Case: ABS (Meets UL flammability rating 94V-0)

Accuracy: +/-0.5% of full scale.

Repeatability: +/-0.1% full scale

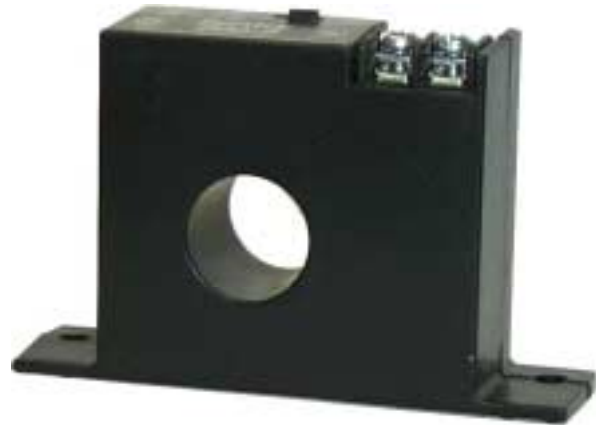
Frequency: Flat from 20-100 Hz.

Response time: 300 msec (99%)

Ripple: Less than 10 millivolts

Supply: 21 to 40VDC

Protection: Reverse polarity, high current



C
U
R
R
E
N
T

Electrical Specifications:

Model	Range	Jumper	Max Current
200-1	0 to 10A	None	200 A continuous on any range
	0 to 20A	Mid	
	0 to 50A	High	
200-2	0 to 100A	None	1200A for 15 sec on any range
	0 to 150A	Mid	
	0 to 200A	High	

ORDERING DATA

Model 200-1 for ranges of 0 to 10, 0 to 20 and 0 to 50 amps full scale.

Model 200-2 for ranges of 0 to 100, 0 to 150 and 0 to 200 amps full scale.

Output is linear with input.

ENERCORP

instruments ltd

25 Shornclyffe Rd, Toronto, ON, M9B 3S4 Tel 1(800)ENERCORP or (416)231-5335 Fax 1(877)ENERCORP or (416)231-7662
Visit our on-line catalogue at www.enercorp.com our e-mail address is info@enercorp.com