

DIFFERENTIAL PRESSURE SWITCH

- Adjustable setpoint
- 0.05 to 12" w.g. range
- UL / CSA

APPLICATION

The model AFS-22 is a general purpose proving switch designed for HVAC and energy management applications. It may be used to sense positive, negative or differential air pressure.

DESCRIPTION

The plated housing contains a diaphragm, a calibration spring and a snap acting switch.

The sample connections on each side of the diaphragm accept 0.25" O.D. metallic tubing via the integral compression ferrule and nut.

An enclosure cover guards against accidental contact with the live switch terminal screws and the set point adjusting screw. The enclosure cover will accept a 0.5" conduit connection.

MOUNTING

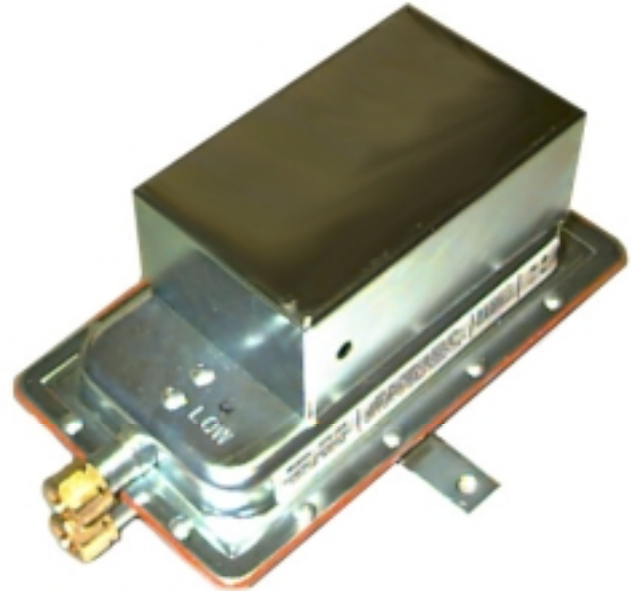
Select a mounting location which is free from vibration. The AFS-222 must be mounted with the diaphragm in any vertical plane in order to obtain the lowest specified operating set point. Avoid mounting with the sample line connections in the UP position. Surface mount via the two 3/16" diameter holes in the integral mounting bracket. The mounting holes are 3-7/8" apart.

AIR CONNECTION

The AFS-222 is designed to accept firm wall sample lines of 1/4" O.D. tubing by means of ferrule and nut compression connections. An optional adaptor suitable for slip on flexible tubing is available.

For sample lines up to 10 feet, 1/4" O.D. tubing is acceptable. For lines up to 20 feet use 1/4" I.D. tubing. For lines up to 60 feet use 1/2" I.D. tubing.

Locate the sample probe a minimum of 1.5 duct diameters downstream from the air source. Install the sampling probe as close to the centre of the air stream as possible.



P
R
E
S
S
U
R
E

TECHNICAL DATA

| | |
|-------------------------------|--|
| <i>Switching Differential</i> | From 0.02" w.c. at min set point to 0.8" at max setpoint |
| <i>Measured Media</i> | Air or combustion gasses that will not degrade silicon |
| <i>Max Pressure</i> | 1/2 psi |
| <i>Temperature Range</i> | -40 to +82C |
| <i>Life</i> | 100,000 cycles min at max pressure and electrical load |
| <i>Electrical Rating</i> | 300VA pilot duty at 115 to 277VAC, 10 amps noninductive |
| <i>Electrical Connections</i> | Screw type terminals with cup washers |
| <i>Conduit Opening</i> | 7/8" diameter opening accepts 1/2" conduit |
| <i>Contacts</i> | SPDT |
| <i>Approvals</i> | CSA, UL, FM |

ORDERING DATA

Model AFS-222 Air Flow Switch

ENERCORP

instruments ltd

25 Shornclyffe Rd, Toronto, ON, M9B 3S4 Tel 1(800)ENERCORP or (416)231-5335 Fax 1(877)ENERCORP or (416)231-7662
Visit our on-line catalogue at www.enercorp.com our e-mail address is info@enercorp.com