

FEATURES :

- Low off center loading error
- Easy mounting
- Rugged load surface

The pedal pressure sensor mounts directly to the brake pedal with its own mounting clamp. Load applied up to 1/2 inch off center, produces less than a 0.5% error. Standard capacity is 300 lbs. This load cell, which is used for brake pedal force measurements by the automotive industry, finds many production applications. It adapts to any of the pedal or bar operated devices used in all production facilities.

**PERFORMANCE SPECS :
3663**

SPECIFICATIONS

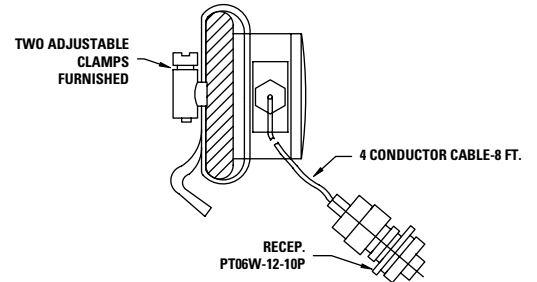
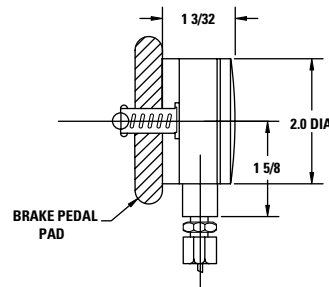
Output at rated capacity: <i>millivolts per volt, nominal</i>	2
Nonlinearity: <i>of rated output</i>	± 0.25%
Hysteresis: <i>of rated output</i>	± 0.1%
Repeatability: <i>of rated output</i>	± 0.1%
Zero balance: <i>of rated output</i>	± 2.0%
Bridge resistance: <i>ohms nominal</i>	350
Temperature range, compensated: °F	+70 to +170
Temperature range, compensated: °C	+21 to +77
Temperature range, usable: °F	-65 to +200
Temperature range, usable: °C	-54 to +93
Temperature effect on output: <i>of reading per °F</i>	± 0.003%
Temperature effect on output: <i>of reading per °C</i>	± 0.0054%
Temperature effect on zero: <i>of rated output per °F</i>	± 0.003%
Temperature effect on zero: <i>of rated output per °C</i>	± 0.0054%
Overload rating, safe: <i>of rated capacity</i>	150%
Excitation voltage, maximum: <i>volts DC or AC rms</i>	20
Insulation resistance, bridge/case: <i>megohms at 50 VDC</i>	>5,000
Available capacities: <i>pounds</i>	50, 100, 200 and 300

MODEL 3663

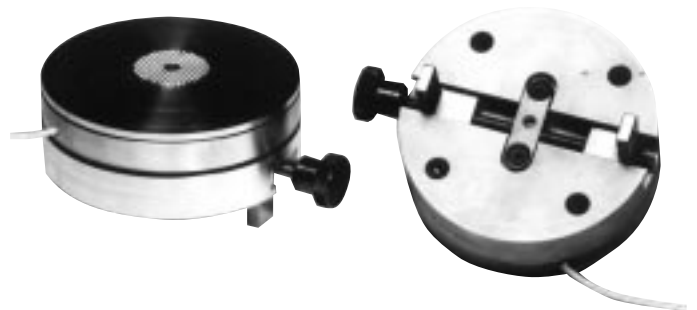
Pedal pressure load cell



English—Capacities available 50, 100, 200 and 300 lbs.
Metric—Capacities available 200, 500, 1K and 1.5K Newtons



MODEL 3663-111



Contact factory for details.