

FEATURES :

The Lebow® overload protector is available in sizes that will accommodate load cells with capacities up to 3,000 lbs. and overloads to 15,000 lbs. in tension and 20,000 lbs. compression. It is available with an optional end plate assembly and rod ends. The overload protector eliminates downtime and replacement costs due to damaged strain gage load cells. The unit does not appreciably affect the cell's dynamic response.

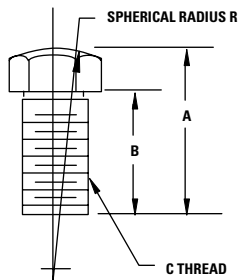
Up to its set point (usually 110%), the application of load results in linear deflection of the system. At 110% of rated load, the patented non-linear spring supporting the cell abruptly collapses, shunting the load in excess of 110% to the built-in mechanical stops.

When the load is removed, the springs automatically return to their original position. The low spring rate, above rated load, allows wide tolerances in mechanical stop settings.

MODEL NUMBER	DESCRIPTION	DIMENSION A	DIMENSION B
6214-111	Protector incl. 3397-100 thru 300, per figure 1 (Rod Ends Opt.)	5.34	11.06
-121	Same as above, incl. tension base, per figure 2 (Rod Ends Opt.)		
-112	Protector incl. 3132-500 thru 3K, per figure 1 (Rod Ends Opt.)	5.84	11.56
-122	Same as above, incl. tension base, per figure 2 (Rod Ends Opt.)		
-131	Protector incl. 3169-108, per figure 1 (Rod Ends Opt.)	6.34	12.06
-132	Same as above, incl. tension base, per figure 2 (Rod Ends Opt.)		

Note: Protectors are sold only as assemblies which include the Lebow® load cell. Consult Lebow® Service Department for installation on existing Lebow® load cells.

LOAD BUTTONS



PART NUMBER	A	B	THD. C	R
11277	0.47	0.31	1/4-28	1.00
11748	0.75	0.38	1/2-20	2.00
18434	1.65	0.94	1-14	4.00
12311	3.50	2.38	2-12	8.00

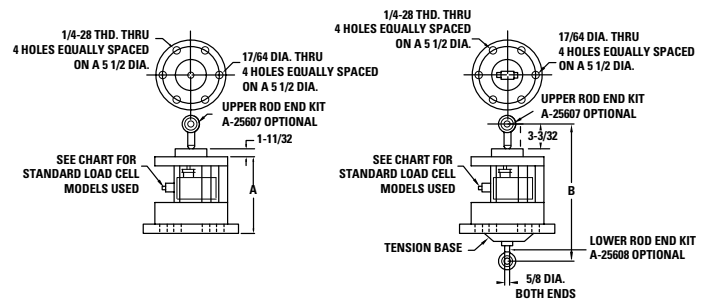
Note: Protectors are sold only as assemblies which include the Lebow® load cell. Consult Lebow® Service Department for installation on existing Lebow® load cells.

MODEL 6214

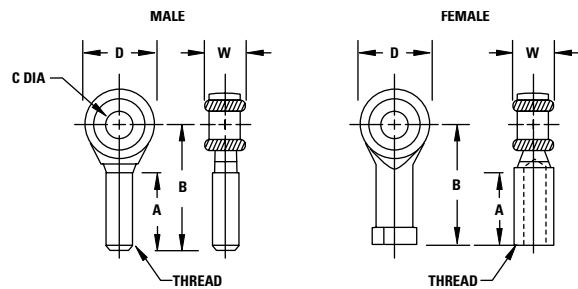
Load cell overload protectors



Alternative overload protectors are possible for other Lebow® load cells. Consult factory.



ROD ENDS



PART NUMBER	A	B	C BORE	D	W	THREAD
26096	1	1.56	0.25	0.75	0.38	1/4-28
26095	1.50	2.44	0.50	1.31	0.63	1/2-20
25607*	1.50	2.63	0.63	1.50	0.75	5/8-18
25608	1.50	2.50	0.63	1.50	0.75	5/8-18
30472	2.13	4.13	1.00	2.75	1.38	1-14

*Female