

9123/5123 SINGLE ENDED BEAM LOAD CELL



DESCRIPTION:

The 9123/5123 are low profile single ended shear beam type load cells. The 9123 is stainless steel whilst the 5123 is nickel plated tool steel.

These products are suitable for small and medium platform scales, overhead track scales, hopper scales and process weighing applications.

Reliable sealing is ensured by the proprietary TRANSEAL potting

compound and additional mechanical protection of the strain gauge area.

Ease of installation is made possible through the use of a partially threaded hole to accept levelling feet, load buttons or loading cables.

FEATURES:

- Low profile construction
- Certified to OIML R60
4000d, Y=20000, Z=8000²
- Sealing: IP67 (DIN 40.050)
- Threaded load hole
- **CAPACITIES: 500 → 5000kg**
(1K→10Klbs also available)

9123/5123 SPECIFICATIONS:

Standard Capacities (=E _{max})	kg / lbs	500, 1000, 2000, 5000 ² / 1K, 2.5K, 4K, 5K, 10K ²		
Accuracy Class According to OIML R-60			C3	C4
Max. Number of Verification Intervals (n _{ic})			3000	4000
Minimum Verification Interval (v _{min} = E _{max} /Y)			E _{max} /6000	E _{max} /8000
Load cell type			9123	5123
Minimum Verification Interval (v _{min} = E _{max} /Y) MR			E _{max} /10000	E _{max} /18000 E _{max} /20000
Accuracy Class According to Type Designation		CC	C3	C4
Combined Error ¹	%S	≤ ± 0.050	≤ ± 0.023	≤ ± 0.018
Hysteresis ¹	%S	≤ ± 0.050	≤ ± 0.017	≤ ± 0.013
Minimum Dead Load Output Return ¹	%S	≤ ± 0.050	≤ ± 0.017	≤ ± 0.013
Minimum Dead Load Output Return 5123 MI8	%S		≤ ± 0.0063	≤ ± 0.0063
Non-Repeatability ¹	%S	≤ ± 0.070	≤ ± 0.035	≤ ± 0.026
Creep Error (30 Minutes) ¹	%S	≤ ± 0.060	≤ ± 0.025	≤ ± 0.018
Creep Error (20-30 Minutes) ¹	%S	≤ ± 0.0200	≤ ± 0.0053	≤ ± 0.0039
Temp. Effect on Min. Dead Load Output ¹	%S _{nom} /5 °C	≤ ± 0.0250	≤ ± 0.0120	≤ ± 0.0088
Temp. Effect on Min. Dead Load Output MR ¹	%S _{nom} /5 °C		≤ ± 0.0070	≤ ± 0.0039 ≤ ± 0.0035
Temp. Effect on Sensitivity ¹	%S/5 °C	≤ ± 0.0250	≤ ± 0.0088	≤ ± 0.0065
Minimum Dead Load	%E _{max}		0	
Safe Load Limit (=E _{lim})	%E _{max}		150	
Ultimate Overload (=E _{ult})	%E _{max}		300	
Maximum Safe Side Load	%E _{max}		100	
Deflection at E _{max}	mm		0.4, 0.8, 1.0, 1.1 / 0.4, 0.8, 1.0, 0.9, 1.1	
Excitation Voltage	V		5...12	
Maximum Excitation Voltage	V		15	
Rated Output (=S _{nom})	mV/V		3 ± 0.003	
Zero Balance	%S		≤ ± 1.0	
Input Resistance	Ω		350 ± 3.5	
Output Resistance	Ω		350 ± 3.5	
Insulation Resistance	MΩ		≥ 5000	
Compensated Temperature Range	°C		-10...+40	
Operating Temperature Range	°C		-40...+80	
Storage Temperature Range	°C		-50...+90	
Element Material			9123: stainless steel, 5123: nickel plated alloy steel	
Sealing (DIN 40.050 / EN 60.529)			IP67	
Recommended Torque on Fixation Bolts	Nm		0,5-2t: 149 / 5t, 5K and 10K: 271	

1 Applies for the temperature range -10 to +40 °C
2 5t and 10K approval pending

Attention:

All dimension tolerances according to ISO 2768m, unless otherwise specified

Cable specifications:

Cable length: 6m
Excitation + Red
Excitation - Black
Output + Green
Output - White
Shield Orange

Cable screen is not connected to load cell body.
Performance may be affected if load cell cables are shortened.

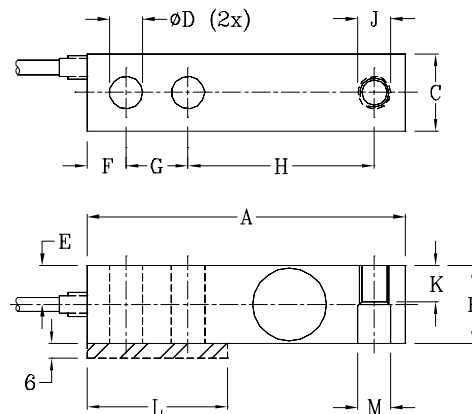
Correct mounting of the load cells is essential to ensure optimum performance. Further information is available on request.

REVERE TRANSDUCERS EUROPE B.V.

Ramshoorn 7
Postbus 6909, 4802 HX Breda
The Netherlands
Tel: (+31) 76-5480700
Fax: (+31) 76-5412854
E-mail: info@revere.nl

REVERE TRANSDUCERS INC.

14192 Franklin Ave
Tustin, CA 92780-7016
U.S.A.
Tel: (+1)714.731.1234
Fax: (+1) 714.731.2019
E-mail: info@reveretransducers.com



Capacity	Dimensions in mm		Dimensions in inches	
	0.5t - 2t	5t	1K - 4K	5K - 10K
A	130.0	171.5	5.12	5.75
B	31.5	37.8	1.25	1.50
C	31.8	38.1	1.25	1.50
ØD	13.5	20.7	.53	.78
E	15.7	19.1	.62	.75
F	15.7	19.1	.62	.75
G	25.4	38.1	1.00	1.50
H	76.2	95.3	3.00	3.75
J	M12x1.75-6H	M20x2.5-6H	½-20UNF-2B	¾-16UNF-2B
K	15.7	19.1	.62	.75
L	57.2	76.2	2.25	3.00
ØM	13.5	20.7	.53	.813

All specifications subject to change without notice

2/3/54/03 E

INTERTECHNOLOGY
INC.

19 Waterman Ave, Toronto, Ont. M4B1Y2
Ph#416-445-5500 Fax#416-445-1170
Toll Free: 1-800-465-1600
Email: sales@intertechnology.com
Website: www.intertechnology.com