

640 SINGLE POINT LOAD CELL



DESCRIPTION:

The 640 is an aluminium single point load cell.

Single point load cells eliminate the need for flexures and levers thus greatly simplifying scale design and reducing cost. The 640 load cell is suitable for applications in a wide range of packaging machinery, low capacity scales, checkweighers and general process weighing.

This product meets the stringent Weight and Measures requirements throughout Europe

FEATURES:

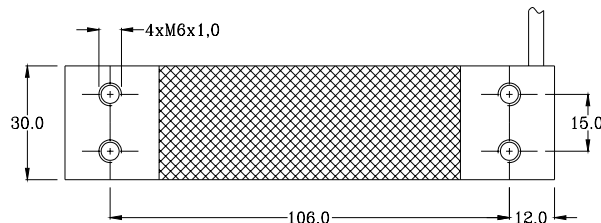
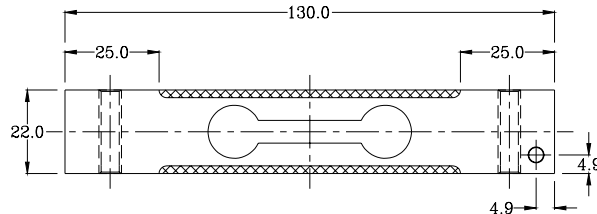
- Certified to OIML R60, **3000d**
- Industry standard mounting configuration
- Moment insensitive, platform size to 350 x 350 mm
- **CAPACITIES:**
3, 5, 7, 10, 15, 20, 30, 35 kg

640: SPECIFICATIONS

Capacity	E_{max}	kg	3, 5, 7, 10, 15, 20, 30, 35	
Accuracy Class According to OIML R60				C3
Maximum Number of Verification Intervals	n_{lc}			3000
Minimum Verification Interval ($v_{min} = E_{max}/Y$)	v_{min}			$E_{max}/7000$
Accuracy Class According to Type Designation ¹			CC	C3
Combined Error		%S	$\leq \pm 0.050$	$\leq \pm 0.023$
Hysteresis		%S	$\leq \pm 0.050$	$\leq \pm 0.017$
Non-Repeatability	E_R	%S	$\leq \pm 0.070$	$\leq \pm 0.035$
Creep Error (30 Minutes)		%S	$\leq \pm 0.060$	$\leq \pm 0.025$
Creep Error (20-30 Minutes)		%S	$\leq \pm 0.0200$	$\leq \pm 0.0053$
Minimum Dead Load Output Return	MDLOR	%S	$\leq \pm 0.050$	$\leq \pm 0.017$
Temperature Effect on Minimum Dead Load Output	TC_o	$\%S_{nom}/5^{\circ}C$	$\leq \pm 0.0250$	$\leq \pm 0.0100$
Temperature Effect on Sensitivity	TC_s	$\%S/5^{\circ}C$	$\leq \pm 0.0250$	$\leq \pm 0.0088$
Eccentric Load Error ² (Up to 124 mm)		%S/mm	$\leq \pm 0.00085$	$\leq \pm 0.00057$
Maximum Platform Size		mm	350 x 350	
Minimum Deadload	E_{min}	$\%E_{max}$	0	
Safe Load Limit	E_{lim}	$\%E_{max}$	150	
Ultimate Load	E_{ult}	$\%E_{max}$	300	
Maximum Safe Sideload		$\%E_{max}$	100	
Deflection at E_{max}		mm		
Excitation Voltage		V	5 ... 15	
Maximum Excitation Voltage		V	18	
Rated Output	S_{nom}	mV/V	2 ± 0.2	
Zero Balance		$\%S_{nom}$	$\leq \pm 1.0$	
Input Resistance	R_{in}	Ω	≥ 350	
Output Resistance	R_{out}	Ω	350 ± 3.5	
Insulation Resistance	R_{ins}	M Ω	≥ 5000	
Compensated Temperature Range	T_{cps}	$^{\circ}C$	-10 ... +40	
Operating Temperature Range	T_{opr}	$^{\circ}C$	-40 ... +80	
Storage Temperature Range	T_{strg}	$^{\circ}C$	-50 ... +90	
Element Material			Aluminium	
Sealing (DIN 40.050 / EN 60.529)			IP65	
Recommended Torque on Fixation Bolts		Nm	0.58, 0.55, 0.50, 0.38, 0.38, 0.35, 0.26, 0.28	

- 1 The specified accuracies apply for the compensated temperature range.
- 2 Test according to OIML R76: $E = 1/3 E_{max}$ at 124 mm from central load axis.

Correct mounting of the load cells is essential to ensure optimum performance. Further information is available on request.



REVERE TRANSDUCERS EUROPE B.V.
 Ramshoorn 7
 Postbus 6909, 4802 HX Breda
 The Netherlands
 Tel.: (+31) 76-5480700
 Fax.: (+31) 76-5412854
 E-mail: info@revere.nl

REVERE TRANSDUCERS INC.
 14192 Franklin Ave
 Tustin, CA 92780-7016
 U.S.A.
 Tel.: (+1) 714.731.1234
 Fax.: (+1) 714.731.2019
 E-mail: info@reveretransducers.com

Cable specifications:

Cable length: 0.5m standard. 6-Wire cable standard.

Excitation +	Green
Excitation -	Black
Output +	Red
Output -	White
Sense +	Blue
Sense -	Brown
Shield	Transparent

Shield is not connected to the load cell body.

Attention:

Dimensions in [mm] and inches
 All dimension tolerances according to ISO 2768m, unless otherwise specified.

All specifications subject to change without notice.

6/03/75/01 E