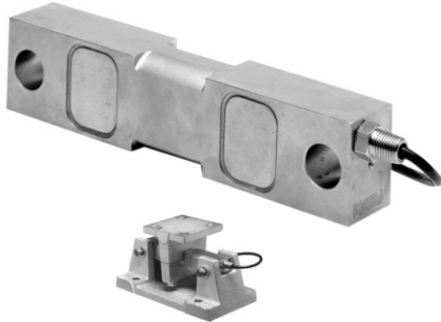


## Double-Ended Shear Beam Load Cell



65016-TWA



### FEATURES

- Rated capacities of 1000 to 125,000 pounds
- Insensitive to side loads and bending moments
- High output - well suited to high deadload/low liveload applications
- Load cells have matched outputs for multi-cell systems
- Excellent combined error and repeatability
- Integral conduit adaptor
- *Sensorgage™* sealed to IP67 standards
- Factory Mutual System Approved for Classes I, II, III; Divisions 1 and 2; Groups A through G. Also, non-incendive ratings (No barriers!).

### DESCRIPTION

The double-ended mounting provides good restraint to possible movement of the tanks and, in many cases, eliminates the need for check rods. The double Shear Beam design gives excellent performance for high capacity loading.

The output is rationalized to facilitate multiple-cell application.

This load cell is constructed of alloy tool steel and is potted to IP67 providing excellent protection against moisture and humidity.

### OPTIONAL FEATURE

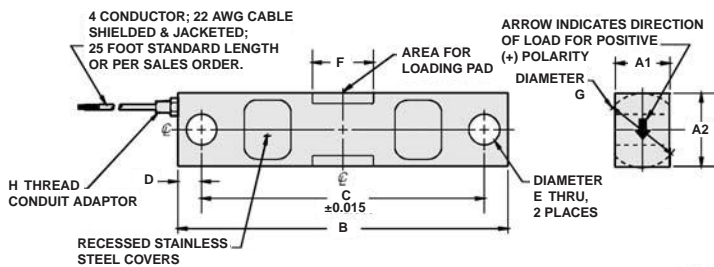
- Weighing assemblies available - 65016 TWA

### APPLICATIONS

- Tank, bin and silo weighing
- Batching, blending and mixing systems
- Level and inventory monitoring

### OUTLINE DIMENSIONS in millimeters

#### 1000 to 50,000lb capacities

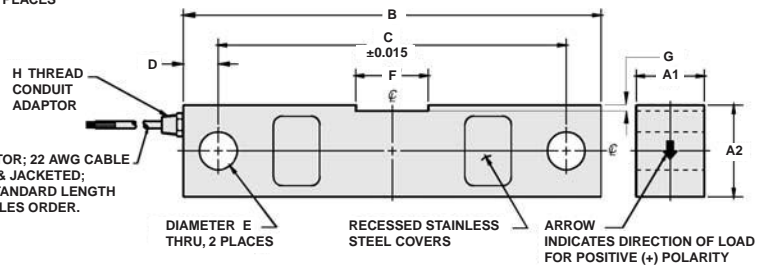


#### Wiring

+ Excitation	Red
- Excitation	Black
+ Output	Green
- Output	White

4 CONDUCTOR; 22 AWG CABLE SHIELDED & JACKETED; 25 FOOT STANDARD LENGTH OR PER SALES ORDER.

#### 75,000 to 125,000lb capacities



CAPACITY	A1	A2	B	C	D	E	F	G	H
1K - 5K	1.25	1.25	7.50	6.25	0.62	0.50	1.22	1.25	1/4-18NPT
10K - 25K	1.44	1.94	8.75	7.50	0.62	0.81	1.62	1.99	1/4-18NPT
35K	1.50	2.50	8.75	7.50	0.62	0.81	1.62	2.50	1/4-18NPT
50K	2.44	2.94	13.50	11.50	1.00	1.31	3.25	2.99	1/2-14NPT
75K	2.44	2.94	13.50	11.50	1.00	1.31	3.12	0.18	1/2-14NPT
100K - 125K	2.94	3.94	18.50	15.00	1.75	1.63	3.25	0.25	1/2-14NPT

SPECIFICATIONS		
PARAMETER	VALUE	UNIT
Rated capacity-R.C. ( $E_{max}$ )	1K, 1.5K, 2.5K, 5K, 10K, 15K, 25K, 35K, 50K, 75K, 100K, 125K	lbs
NTEP/OIML Accuracy class	Standard	
Maximum no. of intervals (n)	--	
Rated output-R.O.	3.0	mV/V
Rated output tolerance	0.25	±% mV/V
Zero balance	1.0	±% FSO
Combined error	0.03	±% FSO
Non-repeatability	0.01	±% FSO
Creep error (20 minutes)	0.03	±% FSO
Temperature effect on zero	0.0015	±% FSO/°F
Temperature effect on output	0.0008	±% of load/°F
Compensated temperature range	14 to 104 (-10 to 40)	°F (°C)
Operating temperature range	0 to 150 (-18 to 65)	°F (°C)
Storage temperature range	-60 to 185 (-50 to 85)	°F (°C)
Sideload rejection ratio	500:1	
Safe sideload	100	% of R.C.
Maximum safe central overload	150	% of R.C.
Ultimate central overload	300	% of R.C.
Excitation, recommended	15	Vdc or Vac rms
Excitation, maximum	25	Vdc or Vac rms
Input impedance	700±14	Ω
Output impedance	703±4	Ω
Insulation resistance at 50VDC	>1000	MΩ
Material	Nickel plated alloy tool steel	
Environmental protection	IP67	

**Note**

FSO - Full Scale Output

All Specifications subject to change without notice.

## Disclaimer

All product specifications and data are subject to change without notice.

Vishay Precision Group, Inc., its affiliates, agents, and employees, and all persons acting on its or their behalf (collectively, "Vishay Precision Group"), disclaim any and all liability for any errors, inaccuracies or incompleteness contained herein or in any other disclosure relating to any product.

Vishay Precision Group disclaims any and all liability arising out of the use or application of any product described herein or of any information provided herein to the maximum extent permitted by law. The product specifications do not expand or otherwise modify Vishay Precision Group's terms and conditions of purchase, including but not limited to the warranty expressed therein, which apply to these products.

No license, express or implied, by estoppel or otherwise, to any intellectual property rights is granted by this document or by any conduct of Vishay Precision Group.

The products shown herein are not designed for use in medical, life-saving, or life-sustaining applications unless otherwise expressly indicated. Customers using or selling Vishay Precision Group products not expressly indicated for use in such applications do so entirely at their own risk and agree to fully indemnify Vishay Precision Group for any damages arising or resulting from such use or sale. Please contact authorized Vishay Precision Group personnel to obtain written terms and conditions regarding products designed for such applications.

Product names and markings noted herein may be trademarks of their respective owners.