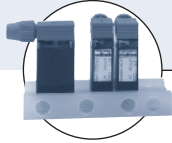




Type 0127 can be combined with...



Manifolds



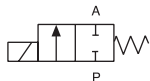
Type 1054
Cable plug

2/2 or 3/2-way Miniature Rocker Solenoid Valve

- Ideal for manifold systems
- Robust isolating diaphragm
- Minimal internal volume
- Very low dead volume
- High back-pressure tightness
- Suitable for aggressive fluids
- NC, NO or universal circuit function
- Compact 16 mm design

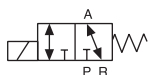
Burkert, the world leader in innovative valve designs for the Medical and Analyzer Industry, first invented the Rocker Solenoid valve over 20 years ago. The Type 0127 leads the industry as one of the most reliable, proven and maintenance free miniature valves in the market today. An inert, robust separating diaphragm, minimal to zero dead volume, low internal volume, and high back pressure make it suitable for handling aggressive chemicals, small samples sizes and costly reagents. The fluid paths were designed to minimize carryover and can be easily inspected for service and maintenance. 2-way and 3-way manifold style valves combined with Burkert's expertise in Microfluidic systems and value added designs are ideally suited for OEMs building Medical Instrumentation.

Circuit function A



2/2-way valve,
direct-acting,
normally closed

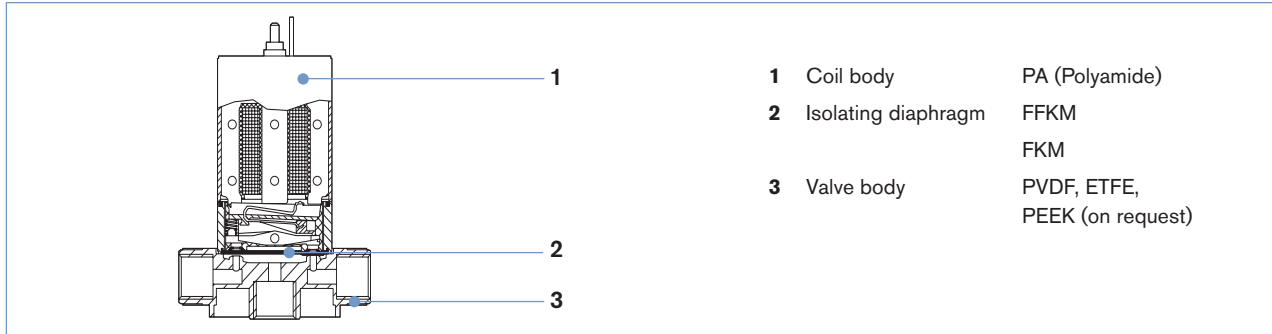
Circuit function T



3/2-way valve,
direct-acting,
universal functions

| Technical data | |
|------------------------------|---|
| Orifice | 1/16" 1.6 mm |
| Body material | PVDF, ETFE, PEEK (on request) |
| Seal material, media | FFKM, FKM, Resistant to neutral and aggressive liquids and gases, see Burkert chemical resistance chart |
| Media temperature | 32°F to 122°F (0°C to +50°C) 32°F to 140°F (0°C to +60°C) |
| Ambient temperature | max. 131°F (+55°C) |
| Internal volumes | Depending on body with sub-base with G 1/8, NPT 1/8 with UNF 1/4" - 28 on request |
| Operating voltage | 12/24 V/DC; 24 V/UC (AC or DC) with LED |
| Power consumption | 3.4 W |
| Voltage tolerance | ±10% |
| Duty cycle | 100% continuous rating Manifold mounting If media or ambient temperatures are above 104°F (+40°C): intermittent operation 40% (10 min) |
| Electrical connection | • Cable plug Type 1054 (supplied as standard) • Two FEP-leads 0.2 mm ² , length 500 mm |
| Protection class | IP 54 with flying leads and single cable plug |
| Installation | As required, preferably with actuator upright |
| Response times | According to ISO 12238:2001; Measured at valve outlet with air at 28 PSI and 68°F (+20°C) Open Closing |

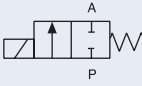
Materials



- 1 Coil body PA (Polyamide)
- 2 Isolating diaphragm FFKM
FKM
- 3 Valve body PVDF, ETFE,
PEEK (on request)

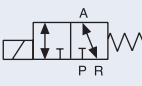
Ordering chart for valves (other versions on request)

PVDF/ETFE valve body, FFKM seal

| Circuit function | Port connection | Orifice [mm] | C _v value water | Pressure range [PSI] | Back pressure [PSI] | Valve body material | Electrical connection | Weight [oz] | Item no. Voltage/Frequency [V/Hz] | | |
|---|-----------------|--------------|----------------------------|----------------------|---------------------|---------------------|-----------------------|-------------|-----------------------------------|---------------------|--------------|
| | | | | | | | | | 12/VDC | 24/UC ¹⁾ | 24/DC |
|  2/2-way valve direct acting, NC | UNF 1/4-28 | 1.5mm | 0.046 | 0 - 28 | 28.0 | ETFE | cable plug 1054 | 2.11 | upon request | 455 329 | 455 402 |
| | | | | | | | 2 leads 19 inches | 2.11 | 455 298 | 455 330 | 455 378 |
| | Sub-base | 1.6mm | 0.046 | 0 - 28 | 28.0 | PVDF | cable plug 1054 | 1.86 | upon request | 455 137 | 455 419 |
| | | | | | | | 2 leads 19 inches | 1.86 | 455 136 | 455 138 | 455 396 |
| | Tube | 1.6mm | 0.046 | 0 - 28 | 28.0 | PVDF | cable plug 1054 | 2.01 | upon request | 455 145 | 455 413 |
| | | | | | | | 2 leads 19 inches | 2.01 | 121 782 | 455 146 | 455 390 |
| | NPT 1/8 | 1.6mm | 0.071 | 0 - 28 | 28.0 | PVDF | cable plug 1054 | 2.18 | 455 155 | 455 157 | 455 408 |
| | | | | | | | 2 leads 19 inches | 2.18 | 455 156 | 455 158 | 455 384 |
| | G 1/8 | 1.6mm | 0.071 | 0 - 28 | 28.0 | PVDF | cable plug 1054 | 2.18 | upon request | upon request | upon request |
| | | | | | | | 2 leads 19 inches | 2.18 | upon request | 457 515 | upon request |

¹⁾ The rectifier, LED and varistor are integrated in the universal current versions (UC).

PVDF/ETFE valve body, STM, FFKM seal

| Circuit function | Port connection | Orifice [mm] | C _v value water | Pressure range [PSI] | Valve body material | Electrical connection | Weight [oz] | Item no. Voltage/Frequency [V/Hz] | | |
|---|-----------------|--------------|----------------------------|----------------------|---------------------|-----------------------|-------------|-----------------------------------|---------------------|--------------|
| | | | | | | | | 12/VDC | 24/UC ¹⁾ | 24/DC |
|  3/2-way valve direct acting, universal functions, any flow direction | UNF 1/4-28 | 1.5mm | 0.029 | 0 - 28 | ETFE | cable plug 1054 | 2.11 | upon request | 455 131 | 455 404 |
| | | | | | | 2 leads 19 inches | 2.11 | 454 691 | 455 132 | 455 380 |
| | Sub-base | 1.6mm | 0.038 | 0 - 28 | PVDF | cable plug 1054 | 1.86 | upon request | 455 167 | 455 421 |
| | | | | | | 2 leads 19 inches | 1.86 | 454 142 | 455 168 | 455 398 |
| | Tube | 1.6mm | 0.038 | 0 - 28 | PVDF | cable plug 1054 | 2.01 | upon request | 455 151 | upon request |
| | | | | | | 2 leads 19 inches | 2.01 | 455 150 | 455 152 | 120 685 |
| | NPT 1/8 | 1.6mm | 0.055 | 0 - 28 | PVDF | cable plug 1054 | 2.18 | 455 161 | 455 163 | 455 410 |
| | | | | | | 2 leads 19 inches | 2.18 | 455 162 | 455 164 | 455 386 |
| | G 1/8 | 1.6mm | 0.055 | 0 - 28 | PVDF | cable plug 1054 | 2.18 | upon request | 457 516 | upon request |
| | | | | | | 2 leads 19 inches | 2.18 | upon request | 457 517 | 120 679 |

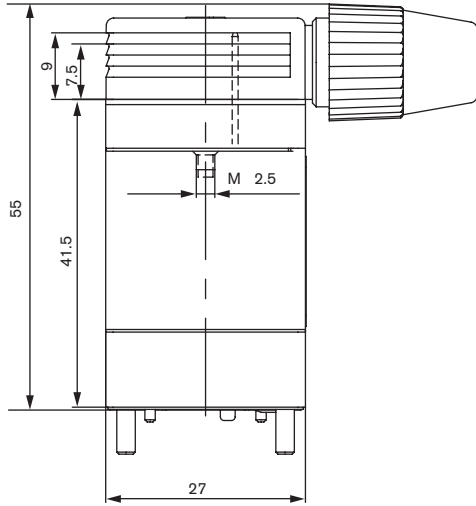
¹⁾ The rectifier, LED and varistor are integrated in the universal current versions (UC).

Options

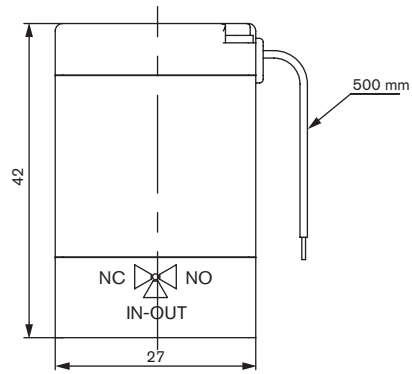
- Function normally open
- Dead volume free design
- Other voltages

Dimensions [mm]

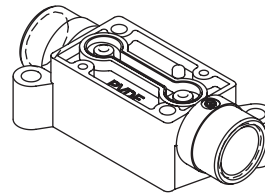
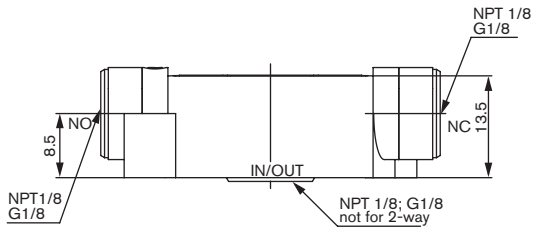
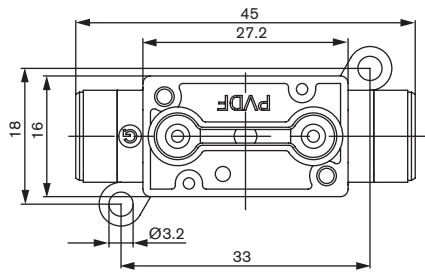
Coil with cable plug Type 1054



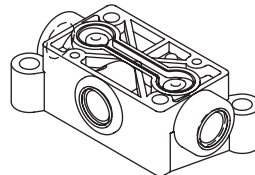
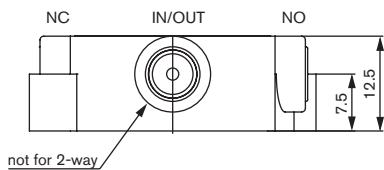
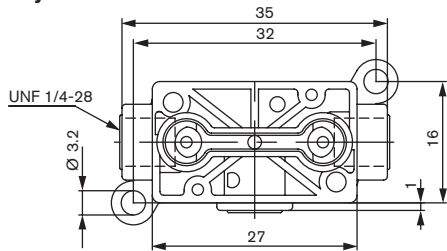
Coil with flying leads



Body with threaded connection

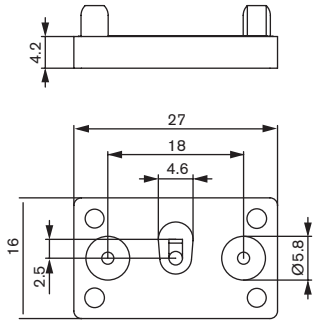


Body with UNF 1/4" - 28

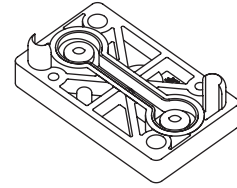
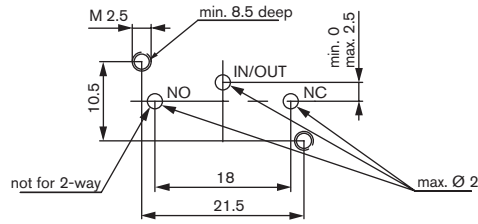


Dimensions [mm]

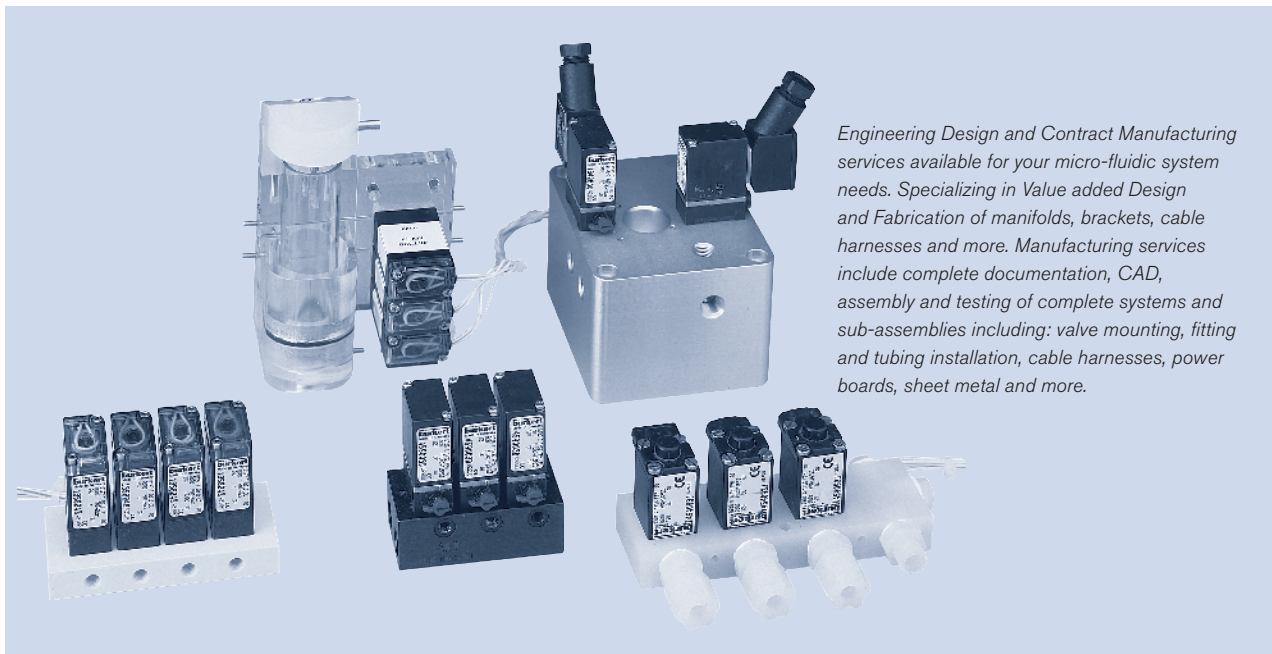
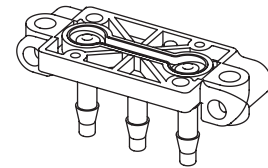
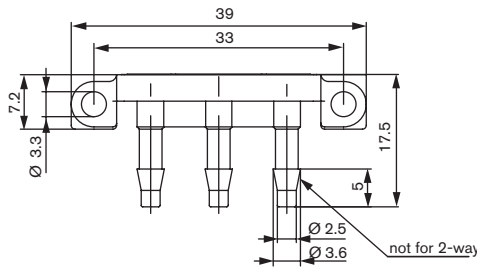
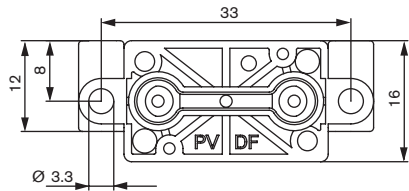
Sub-base body



Interface for manifold



Body with tube connection



Engineering Design and Contract Manufacturing services available for your micro-fluidic system needs. Specializing in Value added Design and Fabrication of manifolds, brackets, cable harnesses and more. Manufacturing services include complete documentation, CAD, assembly and testing of complete systems and sub-assemblies including: valve mounting, fitting and tubing installation, cable harnesses, power boards, sheet metal and more.