

## Features

- Compact spool valve with threaded port connections
- All exhaust ports are pipable, providing better protection against harsh environments
- Standard manual operator
- DIN, Watertight and Explosionproof solenoids available
- Single and dual solenoid constructions
- Mountable in any position

## Construction

Valve Parts in Contact with Fluids	
Body	Black Anodized Aluminum
Spring	Phosphate Treated Black Steel
Shading Coil	Copper
Seals	NBR + PUR
Core and Core Tube	Stainless Steel/Brass
End Covers	6/6 Glass Filled PA/FG
Spool	Aluminum
Internal Parts	Zamak, Steel, CA, Aluminum

## Electrical

Standard Coil and Class of Insulation	Enclosure Type	Watt Rating and Power Consumption				Spare Coil Part Number	
		DC Watts	AC Watts	VA Holding	VA Inrush	AC	DC
F	SC	3	2.5	3.5	6	400127	400127
F	SC	6.9	5	7	15	400727	400727
F	EF	6.9	6.3	7	10.1	266762	270007
F	WT	6.9	6.3	7	10.1	266763	270008

**Standard Voltages:** SC: 24, 120, 240 Volts AC, 50-60 Hz; 12, 24, 120 Volts DC.  
 WT and EF: 24/50-60HZ, (120/60, 110-120/50)①, (240/60, 220-240/50)② Volts AC;  
 6, 12, 24, 120 Volts DC.  
 ① Order as 120/60, 110/50  
 ② Order as 240/60, 220/50

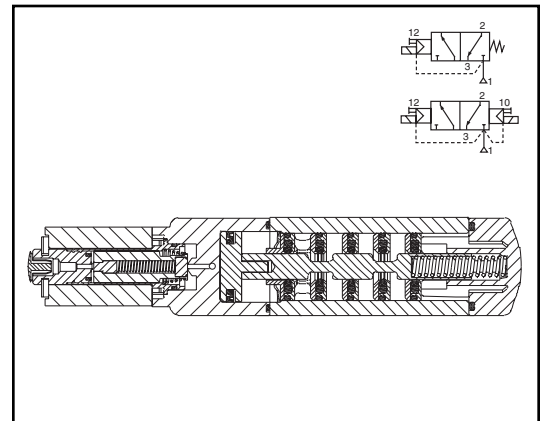
## Solenoid Enclosures

**Standard:** - Prefix

**SC** = IP65 type DIN (open frame) per 46244

**WT** = Combination General Purpose and Watertight Types 1, 2, 3, 3S, 4, and 4X

**EF** = Combination Explosionproof and Watertight Types 3, 3S, 4, 4X, 6, 6P, 7, 9 Class I, Div. 1 (Groups A - D) and Class II, Div. 1 Type 9 (Groups E-G)



## Nominal Ambient Temp. Ranges

**SC:** AC/DC: 5°F to +140°F (-15°C to 60°C)

**EF:** AC: 5°F to +104°F (-15°C to 40°C)  
 DC: 5°F to +77°F (-15°C to 25°C)

**WT:** AC: 5°F to +140°F (-15°C to 60°C)  
 DC: 5°F to +77°F (-15°C to 25°C)

**Note:** For temperatures below 32°F (0°C) moisture-free air must be used.

Refer to Engineering Section for details.

## Approvals

**SC** (2.5W and 3W only) UL recognized component, CSA certified. (Series 8551 only)

**WT:** UL listed, CSA certified. (Series 8551 only)

**EF:** UL and CSA listed solenoid.

Meets applicable CE directives.

SIL 3 capable per IEC 61508 on normally closed single solenoid. Third party certification provided by EXIDA.

Refer to Engineering Section for details.

## Note

When mounting inline 8551 valves with WT & EF solenoids (6.3 & 6.9 watts), ASCO recommends using two (2) 1/8" thick washers under the valve body to provide clearance for the solenoid coil.

**Specifications (English units)**

Pipe Size (in)	Orifice Size (in)	Cv Flow Factor	Operating Pressure Differential (psi)		Fluid Temp. °F (for single and dual solenoid)			Single Solenoid PFD <sub>AVG</sub> = 3.3 x 10 <sup>-3</sup>	Dual Solenoid	Watt Rating/ Class of Coil Insulation	
			Min.	Max.	Min.	Max. AC	Max. DC	Catalog Number	Catalog Number	AC	DC
<b>OPEN FRAME DIN COIL</b>											
1/4	1/4	.86	30	150	5	140	140	SC8551A005MS	SC8551A006MS	2.5	3
1/2	1/2	3.7	30	150	-15	140	140	SC8553A005MS	SC8553A006MS	5	6.9
<b>WATERTIGHT ENCLOSURE</b>											
1/4	1/4	.86	30	150	5	140	77	WT8551A005MS	WT8551A006MS	6.3	6.9
1/2	1/2	3.7	30	150	-15	140	77	WT8553A005MS	WT8553A006MS	6.3	6.9
<b>EXPLOSIONPROOF ENCLOSURE</b>											
1/4	1/4	.86	30	150	5	104	77	EF8551A005MS	EF8551A006MS	6.3	6.9
1/2	1/2	3.7	30	150	-15	104	77	EF8553A005MS	EF8553A006MS	6.3	6.9

**Specifications (Metric units)**

Pipe Size (in)	Orifice Size (mm)	Kv Flow Factor (m <sup>3</sup> /h)	Operating Pressure Differential (bar)		Fluid Temp. °C (for single and dual solenoid)			Single Solenoid PFD <sub>AVG</sub> = 3.3 x 10 <sup>-3</sup>	Dual Solenoid	Watt Rating/ Class of Coil Insulation	
			Min.	Max.	Min.	Max. AC	Max. DC	Catalog Number	Catalog Number	AC	DC
<b>OPEN FRAME DIN COIL</b>											
1/4	6	.75	2	10	-15	60	60	SC8551A005MS	SC8551A006MS	2.5	3
1/2	13	3.2	2	10	-25	60	60	SC8553A005MS	SC8553A006MS	5	6.9
<b>WATERTIGHT ENCLOSURE</b>											
1/4	6	.75	2	10	-15	60	25	WT8551A005MS	WT8551A006MS	6.3	6.9
1/2	13	3.2	2	10	-25	60	25	WT8553A005MS	WT8553A006MS	6.3	6.9
<b>EXPLOSIONPROOF ENCLOSURE</b>											
1/4	6	.75	2	10	-15	40	25	EF8551A005MS	EF8551A006MS	6.3	6.9
1/2	13	3.2	2	10	-25	40	25	EF8553A005MS	EF8553A006MS	6.3	6.9

**Dimensions inches (mm)**

Series	8551	8553
NPT	1/4	1/2
L1	5.69 (145)	6.70 (170)
L2	7.79 (198)	9.18 (233)
H1	1.10 (28)	1.58 (40)
W	1.77 (45)	2.85 (72)

**NOTE:** Valve shown with CM22 DIN terminal coil and connector. Connector sold separately.

