



238 Pillow Street
 Butler, PA 16001
 724-283-4681
 724-283-5939 (fax)
 www.bwieagle.com

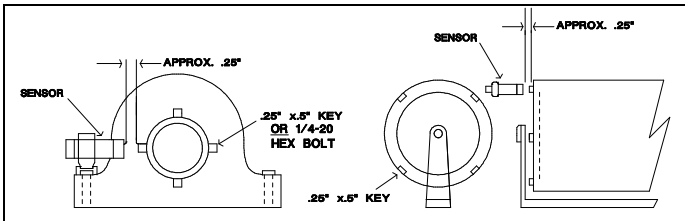
PRODUCT INFORMATION BULLETIN

3 WIRE PROX SENSOR Inductive Proximity Type MODELS 10-7239

INSTALLATION

1. Select the shaft or roller to be monitored. If a roller is selected, be sure it is always contacting the conveyor belt.
2. Affix a metal target on the shaft or roller. (Keystock, 1/4" Hex nut, 1/4-20 bolt, etc.)
NOTE: The more surface area the target has, the greater the sensing distance will be. (MAX = approximately .4 in. from the target)
3. Adjust the sensor so the target passes through the center area of the sensor face. This will produce the best sensitivity. The LED indicator in the sensor will blink momentarily when the target is in front of the sensor. Another pulse will not be produced again until this target has left the sensing area and then returned again.

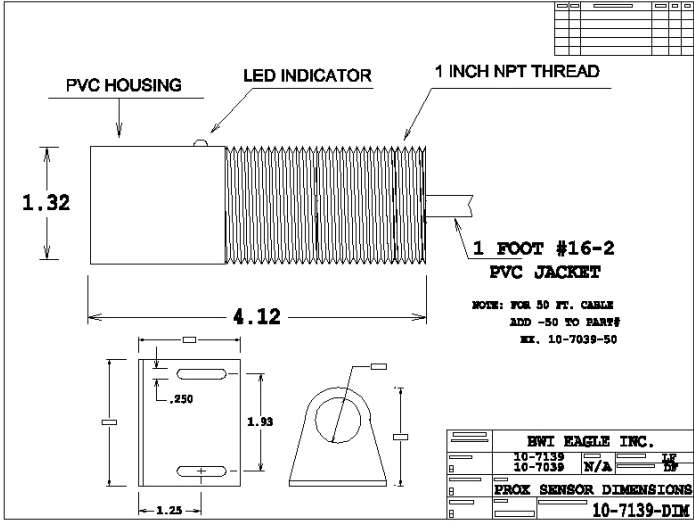
FIGURE 1



SPECIFICATIONS

Dimensions	5 in. x 3 in. O.D.
Mounting	1 in. Male N.P.T. Conduit
Housing Material	Threaded PVC Housing
Sensor Type	Inductive Proximity (METAL)
DC Power Input	10 VDC - 48 VDC @ 5mA
Pulse Output	TTL Compatible Regulated 5.0 VDC @ 15 ms
Minimum Output Voltage (high)	4.91 VDC
Maximum Output Voltage (high)	5.2 VDC
Minimum Output Voltage (low)	- .2 VDC
Maximum Output Voltage (low)	+ .15 VDC
Sensing Speed Range	1 to 2500 RPM
Sensor Cable	20 awg. 3 conductor w/shield (2 ft. pigtail)
Sensor Cable Input	RED = Positive BLACK = Common WHITE = Output

DIMENSIONS



DOCUMENT DATE: 11-Aug-04



238 Pillow Street
 Butler, PA 16001
 (724) 283-4681
 Fax (724) 283-5939
www.bwieagle.com