



238 Pillow Street
Butler, PA 16001
724-283-4681
724-283-5939 (fax)
www.bwieagle.com

PRODUCT INFORMATION BULLETIN

EAGLE 2 Dual Channel Position Controller MODEL 11-6000

DESCRIPTION

The Eagle 2 Dual Channel Position Controller detects the presence of any metal target in front of its two-wire proximity sensor and produces a continuous relay output until the target has moved away. This model is equipped with two independent sensors and relay outputs to allow ease of interfacing for applications such as high/low bin level indication or left/right position detection. The rugged NEMA enclosure and encapsulated sensors meet virtually any industrial environmental challenge.

INSTALLATION

DISCONNECT AC Power before proceeding with instructions.

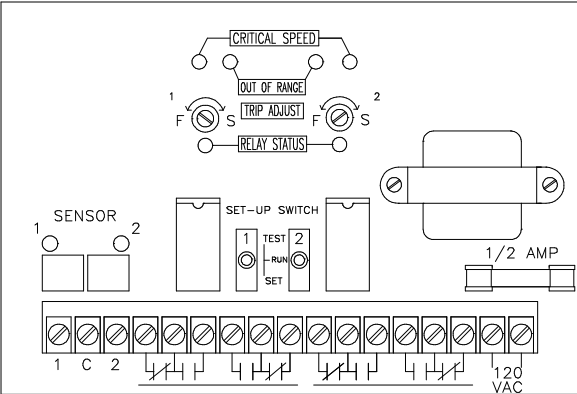
1. Mount the EAGLE 2 control unit in a convenient location.
2. Make the following connections:
 - A. Connect power cable to 120VAC.
 - B. Connect control cables to proper terminals in your control circuit.
 - C. Connect EAGLE MODEL 10-7439 PROX SENSOR cables to the sensor connectors on the control unit.
3. Install sensors at desired location. See sensor installation section.

SET-UP AND TESTING

1. Turn TRIP ADJUST pot counterclockwise until it stops. (approximately 7 o'clock).
2. Place a metal target in front of the prox sensor. This will cause the SENSOR LED on both the sensor and the control unit to illuminate continuously.
3. The control relay will now energize within approximately 1/2 second.
4. Remove the metal target from in front of the sensor. The SENSOR LEDs will now extinguish, and the control relay will de-energize within approximately 1/2 second.
5. If additional **Off-Delay** is desired, continue to turn TRIP ADJUST pot clockwise to a maximum delay setting of 10 seconds.
6. Repeat steps 1 thru 5 for the second sensor adjustment.



CONTROLS AND INDICATORS



SPECIFICATIONS

| | |
|-----------------------|---------------------------------------|
| AC Input | 120 VAC 15 W |
| Fuse Protected | 1 amp |
| Operating Temperature | -40°C to +60°C (-40° to +140°F) |
| Off Delay | Adjustable to a maximum of 10 seconds |
| Relay Contacts | DP/DT 8 amp @ 120 VAC |
| Response Time | Approximately 1/2 second |
| Housing | NEMA 12 Standard |

REPLACEMENT AND OPTIONAL PARTS

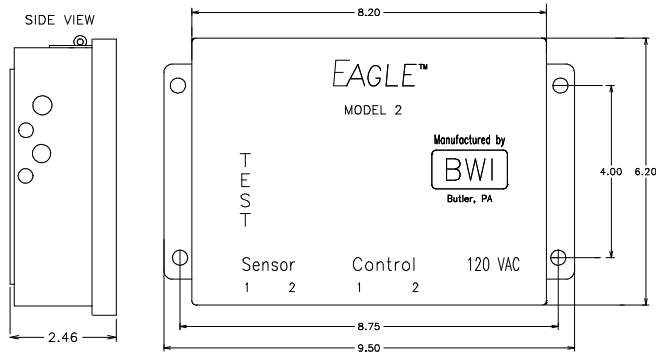
| | |
|--|-------------|
| P.C. Board | 11-6002 |
| 2-Wire Proximity Sensor, Threaded Barrel | 10-7439 |
| Relay | 99-REL-0001 |
| Strain Relief (Power Input) | 99-CON-0011 |
| Strain Relief (Control) | 99-CON-0012 |

EAGLE 2

Dual Channel Position Controller

MODEL 11-6000

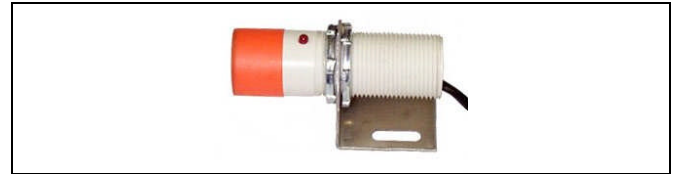
DIMENSIONS



PROX SENSOR

Inductive Proximity Type

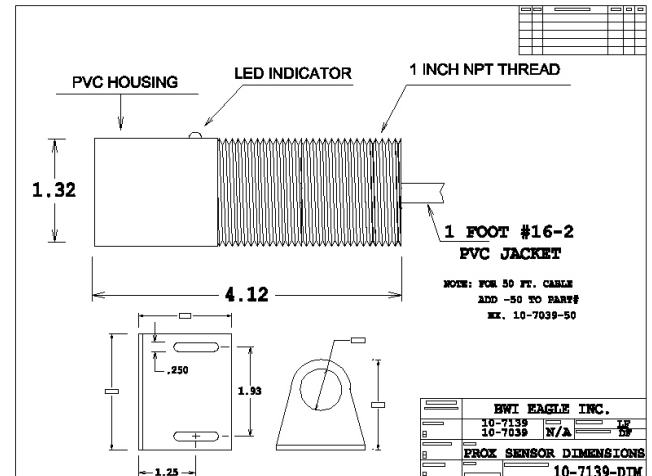
MODEL 10-7439



INSTALLATION

1. Select a location for the sensor where the target will be able to pass in front of the sensing face.
2. Mount sensor firmly with hose clamps or U-bolts to prevent it from moving or working loose. Tape is **NOT** recommended as a fastener.
3. Before tightening, and with the target in front of the sensor, check to be sure that the LED has illuminated continuously. Effective distance between the sensor and target is approximately 1/8 to 1/4 inch.

DIMENSIONS



SPECIFICATIONS

| | |
|--------------------------|---|
| Dimensions | 4.12 in. x 1.32 in. O.D. |
| Sensor Type | Inductive Proximity (Metal) |
| Sensor Power Requirement | Current Limited 12VDC from Control Unit |
| Unit Sensor Cable | Twisted Pair 16/2 - 75 Ft. w/Connector |
| Distance | Sensor to Control Unit - 1 Mile |

DOCUMENT DATE: 14-Sep-04



238 Pillow Street
Butler, PA 16001
(724) 283-4681
Fax (724) 283-5939
www.bwieagle.com