



238 Pillow Street
Butler, PA 16001
724-283-4681
724-283-5939 (fax)
www.bwieagle.com

PRODUCT INFORMATION BULLETIN

AIR-EAGLE® SR 2.4 GHz RF Transmitter MODEL 38-1400-DC – Rev.3

DESCRIPTION

The AIR-EAGLE SR, MODEL 38-1400-DC is an R.F. transmitter capable of sending up to four dry contact input commands to the Air-Eagle SR Receiver, model 38-2000 or 38-8000. The TX and RX combine to create a short range radio frequency system that operates hazardous or hard-to-reach electrical apparatus from safe, convenient locations of up to 300 feet away. This unit is user-programmable for up to 128 digital addresses and eight network frequencies to allow multiple transmitters and receivers to operate simultaneously in the same area without interference.

INSTALLATION

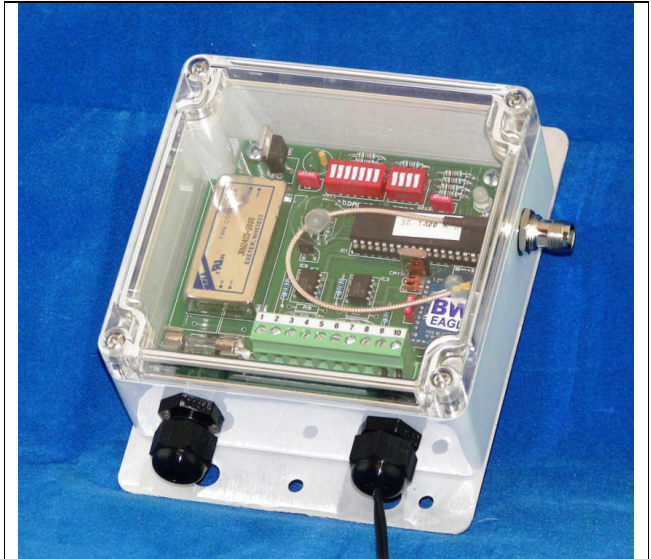
1. Mount the AIR-EAGLE SR TRANSMITTER in a convenient location
2. Install wiring to contact input terminal strip.
3. Connect DC power and control to the proper terminals in your control circuit.

DIGITAL ADDRESS & FREQUENCY SET-UP

This transmitter is factory programmed to Frequency #1 and Digital Address "0". These settings can be changed by the user in any combination **but must match the receiver that is set up to communicate with this transmitter.** **If using this transmitter with a model 38-2000 4-relay receiver, the digital address must be kept at the default of Digital Address "0".**

- 1) Remove top cover.
 - 2) Select desired address and/or network frequency
 - 3) Move SW4 on SEL2 to the "CLOSED" position. The TX LED will illuminate (no data is being transmitted during this programming)
 - 4) Once LED is illuminated, move SW4 on SEL2 back to the "OPEN" position. The TX LED will extinguish.
 - 5) Programming is now complete. Replace top cover.
- Note – Selected address and frequency settings will be maintained, in the internal flash memory, even if power is removed from unit. The above procedure needs to be performed only if *changing digital address and/or network frequency*

| | | | | |
|--|--|--------|-------------|--------|
| SEL1 (ADDRESS) | Seven dip switches for selecting digital address of this transmitter (Maximum of 128 combinations) | | | |
| | Network Address | SW1 | SW2 | SW3 |
| SEL 2 (SW 1-3): (NETWORK FREQUENCY) | 1 | OPEN | OPEN | OPEN |
| | 2 | CLOSED | OPEN | OPEN |
| | 3 | OPEN | CLOSED | OPEN |
| | 4 | CLOSED | CLOSED | OPEN |
| | 5 | OPEN | OPEN | CLOSED |
| | 6 | CLOSED | OPEN | CLOSED |
| | 7 | OPEN | CLOSED | CLOSED |
| | 8 | CLOSED | CLOSED | CLOSED |
| SEL2 (SW4) | Normal Operation | | Programming | |
| | OPEN | | CLOSED | |

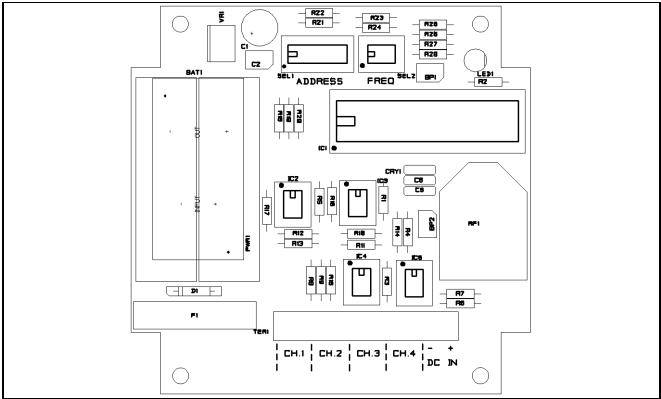


Dimensions (with mounting plate) 6.3" L x 4.8" W x 2.3" H

TERMINAL STRIP WIRING

| | | | | | |
|---|---------------|---|---------------|----|--------------------|
| 1 | Ch1 Input (+) | 5 | Ch3 Input (+) | 9 | (-) 9-36 VDC INPUT |
| 2 | Ch1 Input (C) | 6 | Ch3 Input (C) | 10 | (+) 9-36 VDC INPUT |
| 3 | Ch2 Input (+) | 7 | Ch4 Input (+) | | |
| 4 | Ch2 Input (C) | 8 | Ch4 Input (C) | | |

CONTROLS & INDICATORS



| | |
|--------------------|--|
| TX LED | Illuminates continuously while any button is depressed and unit is transmitting. |
| Dry Contact Inputs | Transmits individual RF codes to the receiver |

AIR-EAGLE® SR

2.4 GHz RF Transmitter

MODEL 38-1400-DC – Rev.3

APPROVALS

| | |
|---------------------|---------------|
| United States (FCC) | OUR-XBEEPRO |
| Canada (IC) | 4214A-XBEEPRO |
| Europe (CE) | ETSI |

SPECIFICATIONS

| | |
|-----------------------|---|
| DC Input | 9 – 36 VDC @ 10 Watts |
| Enclosure | ABS Plastic NEMA 3, 3R, 4, 12 + 13 |
| Transmit Frequency | 2.4GHz Spread Spectrum |
| Transmitter Coding | 128 Digital Addresses (Available only when communicating with model 38-8000) |
| Transmitter Channels | 8 Independent Network Frequencies |
| Antenna Connection | Internal – No external antenna needed |
| RF Output Power | 1 mW |
| Transmit Range | Approximately 300 Feet |
| Operating Temperature | -40° F to +185° F |

REPLACEMENT PARTS & ACCESSORIES

| | |
|---|--------------------------------|
| PC Board (Main) | 38-1402-DC |
| Standard Antenna (Included): | |
| 2.4GHz TNC Portable Antenna (For distances up to 300 feet*) | 49-1201 |
| Optional Antennas and Accessories – Used to increase range in both non line of sight and line of sight applications. - Contact BWI Eagle for recommendations | |
| 2.4GHz Thru-Hole Mount Mobile Antenna | 49-2201 |
| 2.4GHz Magnetic Mount Mobile Antenna | 49-2202 |
| 2.4GHz Omni Directional Antenna | 49-3201 |
| 2.4GHz 13dB Yagi Antenna | 49-3202 |
| Flex Coax Cable w/Connectors – Connects external antenna(s) to base unit(s). | 49-4000-XX (XX = # of Feet) |
| Inline Lightning Arrestor | 49-5002 |
| * = Line of Sight | |

LIMITED WARRANTY STATEMENT

BWI Eagle Inc. warrants the Air-Eagle Remote Control System, if properly used and installed, will be free from defects in material and workmanship for a period of 1 year after date of purchase. Said warranty to include the repair or replacement of defective equipment. This warranty does not cover damage due to external causes, including accident, problems with electrical power, usage not in accordance with product instructions, misuse, neglect, alteration, repair, improper installation, or improper testing. This limited warranty, and any implied warranties that may exist under state law, apply only to the original purchaser of the equipment, and last only for as long as such purchaser continues to own the equipment. This warranty replaces all other warranties, express or implied including, but not limited to, the implied warranties of merchantability and fitness for a particular purpose. BWI Eagle makes no express warranties beyond those stated here. BWI disclaims without limitation, implied warranties of merchantability and fitness for a particular purpose. Some jurisdictions do not allow the exclusion of implied warranties so this limitation may not apply to you. To obtain warranty service, contact BWI Eagle for a return material authorization. When returning equipment to BWI Eagle, the customer assumes the risk of damage or loss during shipping and is responsible for the shipping costs incurred.

DOCUMENT DATE: 17-Jul-07



238 Pillow Street
Butler, PA 16001
(724) 283-4681
Fax (724) 283-5939
www.bwieagle.com